

Comprehensive Park & Recreation Plan

APPENDIX A: PARK INVENTORY

This page intentionally left blank

	Acreage	Ball Diamond Fields	Rectangular Fields	Aquatics Facility (Pool, Splash Pads)	Playground	Basketball 1/2 Court	Pickleball Court	Dog Off-Leash Area	Skate Park	Disc Golf	Shelters	Picnic Facility	Hand Boat Launch	Water Access	Community Garden	Fishing	Signage	Interpretive Sites	Historical Significance	Public Art	Restrooms	Off Street Parking	Gym	Water View	Paths
NEIGHBORHOOD PARKS																									
Elizabeth Park	1.8				•	•						•					•								•
Granite Highlands Park (under development)	-																								
Hartwood Park	7.0				•					•		•					•					•		•	•
Hamllik Park	5.0	1	1		•						•	•					•				•	•			•
Oak Tree Park	2.8				•	•						•					•					•			•
River Bend Park	0.6											•		•			•							•	
Riverview Park	0.4																								
Total Neighborhood Parks	17.6	1	1	0	4	2	0	0	0	1	1	5	0	1	0	0	5	0	0	0	1	3	0	2	4
COMMUNITY PARKS																									
Hathaway Park (Lower Level)	7.9	1	1		•							•	•	•			•				•	•		•	
Hathaway Park (Upper Level)	7.9				•	•	•				•	•									•	•		•	•
Schmid Family Park	17.8													•								•		•	
Total Community Parks	33.6	1	1	0	2	1	1	0	0	0	1	2	1	2	0	0	1	0	0	0	2	3	0	3	1
SPECIAL USE AREAS																									
Camas/Washougal Skate Park	1.4								•																
Downtown Park and Community Garden	0.4														•		•								
George Schmid Memorial Park	4.0	3	1														•				•	•			
Pedestrian Tunnel	1.0																•	•	•	•				•	•
Reflection Plaza	0.3										•	•										•			
Washougal Memorial Cemetery	12.1										•						•					•			
Total Special Use Areas	19.2	3	1	0	0	0	0	0	1	0	2	1	0	0	1	0	4	1	1	1	1	3	0	1	1
POCKET PARKS																									
Beaver Park	0.2				•						•						•			•					
Main Street Park	0.1																								•
Total Pocket Parks	0.3	0	0	0	1	0	0	0	0	0	1	0	0	0	0	0	1	0	0	1	0	0	0	0	1

Appendix A: City of Washougal Park and Recreation Facility Inventory

	Acreage	Ball Diamond Fields	Rectangular Fields	Aquatics Facility (Pool, Splash Pads)	Playground	Basketball 1/2 Court	Pickleball Court	Dog Off-Leash Area	Skate Park	Disc Golf	Shelters	Picnic Facility	Hand Boat Launch	Water Access	Community Garden	Fishing	Signage	Interpretive Sites	Historical Significance	Public Art	Restrooms	Off Street Parking	Gym	Water View	Paths
WATERFRONT PARKS																									
Ninebark Park (under development)	-																								
Sandy Swimming Hole	0.9											•		•		•	•				•	•		•	•
Steamboat Landing	1.6													•		•	•			•	•	•		•	•
Total Waterfront Parks	2.5	0	0	0	0	0	0	0	0	0	0	1	0	2	0	2	2	0	0	1	2	2	0	2	2
Total Developed Parks	73.2	5	3	0	8	3	1	0	1	1	5	10	1	5	1	2	13	1	1	3	6	12	0	8	9
NATURAL PARKS																									
Campen Creek Park	4.5											•					•							•	•
Eldridge Park	15.5											•					•							•	•
Kerr Park	13.7																•							•	•
Lookout Ridge Park	1.1											•													•
Lookout Ridge Phase 1C, Tract D	0.6																								
Lookout Ridge Phase 3, Tract B (Dogwood Park)	0.5																								
Oak Heights, Tract 2	0.3																								
Riverview Terrace Phase 1, Tract 2	1.2																								
Rolling Meadows, Phase 4, Tract D	4.4																								
Rolling Meadows Phase 1, Tract A	4.3																								
Rolling Ridge Phase 2, Tract 3	0.7																								
Summer Slope North, Tract D	4.0																								
Vintage Crest Estates Phase I	0.6																								
Total Natural Parks	51.4	0	0	0	0	0	0	0	0	0	0	3	0	0	0	0	3	0	0	0	0	0	0	3	4
Total Parks and Recreation Facilities	124.6	5	3	0	8	3	1	0	1	1	5	13	1	5	1	2	16	1	1	3	6	12	0	11	13

Appendix A: City of Washougal Park and Recreation Facility Inventory

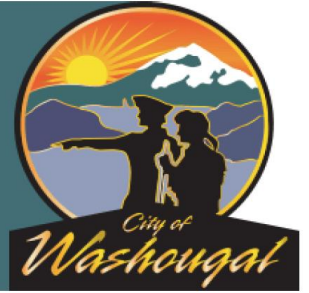
	Acreage	Ball Diamond Fields	Rectangular Fields	Aquatics Facility (Pool, Splash Pads)	Playground	Basketball 1/2 Court	Pickleball Court	Dog Off-Leash Area	Skate Park	Disc Golf	Shelters	Picnic Facility	Hand Boat Launch	Water Access	Community Garden	Fishing	Signage	Interpretive Sites	Historical Significance	Public Art	Restrooms	Off Street Parking	Gym	Water View	Paths
OTHER RESOURCES/REGIONAL PARKS																									
Cottonwood Beach Park	-												•	•										•	
Goot Park	-	1			•								•	•							•			•	
Heritage Marina	15												•	•										•	
Lacamas Regional Park	-				•						•	•	•	•			•				•	•		•	•
Port of Camas/Washougal Marina	17												•	•			•					•		•	
Row on 29th Street, North of F Street	-																								
Steigerwald Lake National Wildlife Refuge	627																							•	
Washougal River Greenway	-			•							•	•	•	•			•	•	•	•				•	•
William Clark Regional Park	85			•							•	•	•	•			•	•	•	•		•	•	•	•
Total Other Resources/Regional Parks	744.2	1	0	2	2	0	0	0	0	0	3	3	7	7	0	2	4	2	2	0	3	3	0	8	3
SCHOOLS																									
Cape Horn-Skye Elementary			•			•																	•		
Gause Elementary			•			•																	•		
Columbia River Gorge Elementary						•																	•		
Hathaway Pleasant Elementary		•	•			•																	•		
Canyon Creek Middle School			•																				•		
Jemtegaard Middle School			•																				•		
Washougal High School		•	•																				•		
Total Schools		2	6	0	0	4	0	0	0		0	0	0	0	0	0	0	0	0	0	0	0	7	0	0

Comprehensive Park & Recreation Plan

APPENDIX B: QUESTIONNAIRE SUMMARY

This page intentionally left blank

Washougal Parks Master Plan



Appendix: Questionnaire Results

From September 22, 2020 through October 9, 2020, the City of Washougal used an online questionnaire to gather information about existing conditions and future opportunities for the city-wide park and recreation system. When combined with outcomes from other community engagement activities from the planning process, the questionnaire results will help shape the future vision for Parks Master Plan.

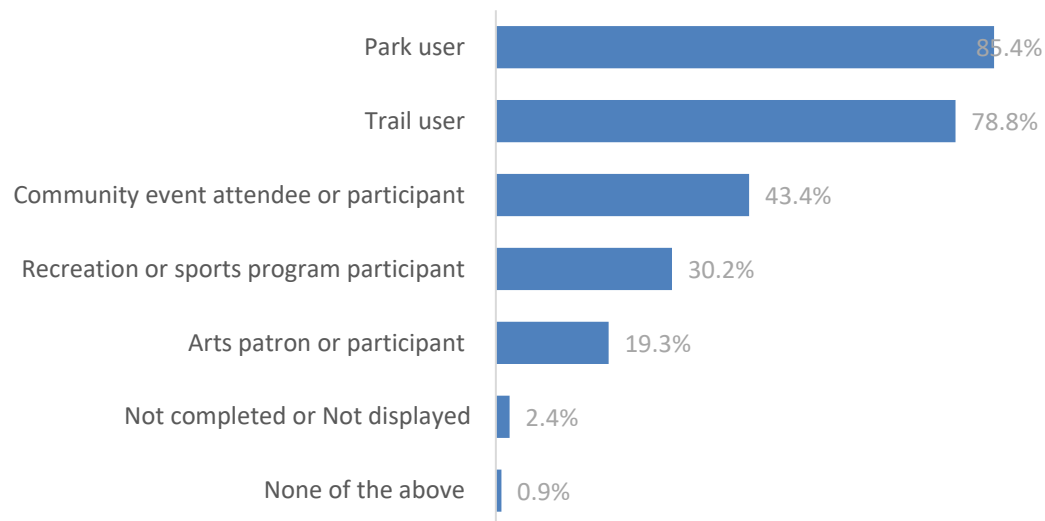
The online questionnaire allowed anyone to provide input on the project at their own pace through a link posted on the City website. The link was also posted on the City Facebook account and sent to various organizations. There were a total of 212 respondents.

This questionnaire is one of several methods for collecting input from the community. The results of all public involvement efforts will be considered together to balance the relative advantages and disadvantages of each.

This summary provides percentages based on the total number of responses for each question. For many questions, the questionnaire allowed respondents to select multiple responses. Therefore, the total number of responses for each question may vary. The Open-Ended Responses section provides a complete list of all comments received from the questionnaire and is found after the questionnaire results.

How do you use parks?

1. "I consider myself to be a..." (select all that apply)



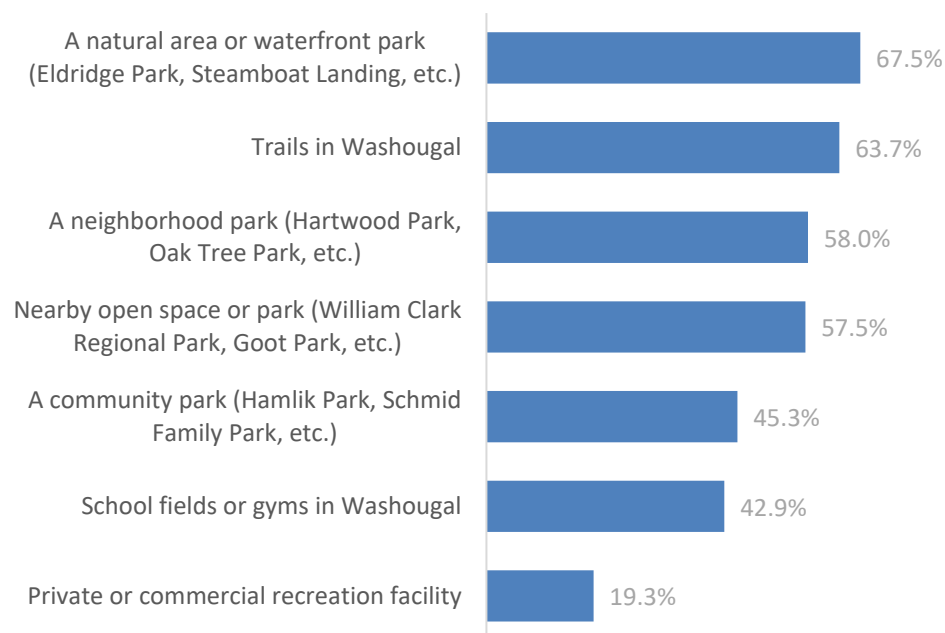
Answer	Percentage
None of the above	0.9%
Not completed or Not displayed	2.4%
Arts patron or participant	19.3%
Recreation or sports program participant	30.2%
Community event attendee or participant	43.4%
Trail user	78.8%
Park user	85.4%

2. Prior to the novel coronavirus/COVID-19 park closures and gathering restrictions, how often did you go to the following to play, relax, exercise, or spend time with friends? (For each there will be a drop down with the following options: Never; Not in the last three years; Once or twice a year; Regularly in season (once a month or more); Frequently in season (once a week or more); No answer; Not completed /displayed)

	Never	Not in the last three years	Once or twice a year	Regularly in season (once a month or more)	Frequently in season (once a week or more)	No answer	Not completed /displayed
A neighborhood park (Hartwood Park, Oak Tree Park, etc.)	9.0%	2.4%	17.5%	24.5%	33.5%	5.2%	8.0%

A community park (Hamlik Park, Schmid Family Park, etc.)	8.0%	5.7%	26.9%	24.5%	20.8%	6.1%	8.0%
A natural area or waterfront park (Eldridge Park, Steamboat Landing, etc.)	1.4%	0.0%	17.9%	32.1%	35.4%	5.2%	8.0%
Trails in Washougal	2.8%	1.4%	18.4%	31.6%	32.1%	5.7%	8.0%
School fields or gyms in Washougal	18.4%	7.1%	15.6%	20.8%	22.2%	8.0%	8.0%
Private or commercial recreation facility	27.4%	16.0%	17.9%	9.9%	9.4%	11.3%	8.0%
Nearby open space or park (William Clark Regional Park, Goot Park, etc.)	4.2%	1.4%	22.2%	31.1%	26.4%	6.6%	8.0%

(Regularly/frequently in season responses)



3. Which park, trail or facility is your favorite?

See open-ended comments responses.

What is important to you?

4. What is most important when you think about parks and recreation in Washougal? (Choose your top 3)

Being surrounded by trees, plants, water
and wildlife



Opportunities for play



Getting together with friends, family,
neighbors



Competing in organized sports (team
sports, competitions/tournaments)



Walking, running or biking on trails



Walking or playing with my dog or pet



Enjoying art, music, culture



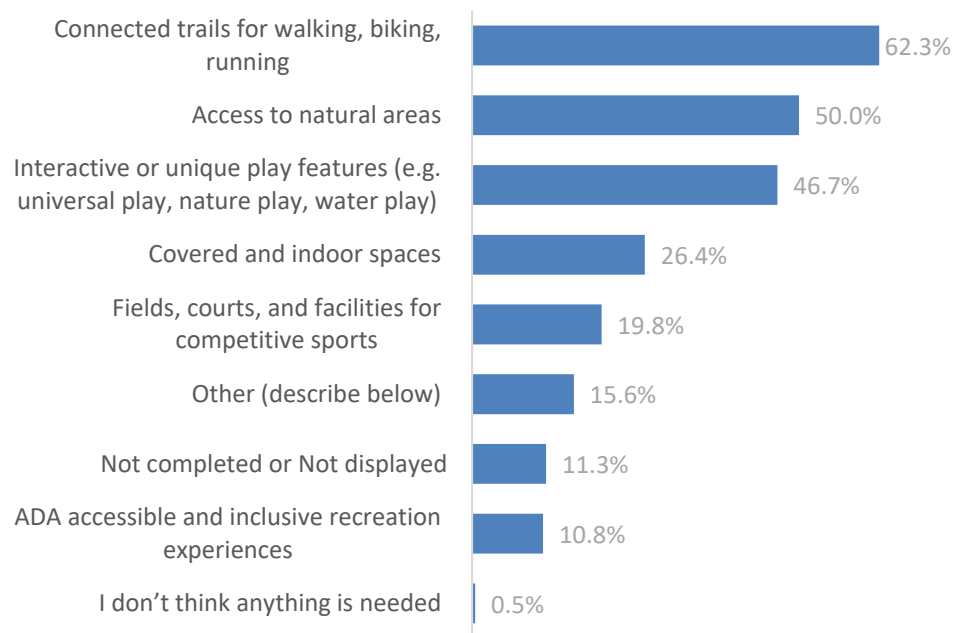
Exercizing



Answer	Count	Percentage
Competing in organized sports (team sports, competitions/tournaments)	29	13.68%
Enjoying art, music, culture	42	19.81%
Being surrounded by trees, plants, water and wildlife	138	65.09%
Opportunities for play	93	43.87%
Walking or playing with my dog or pet	60	28.30%
Exercising	8	3.77%
Walking, running or biking on trails.	118	55.66%
Getting together with friends, family, neighbors	54	25.47%
Not completed or Not displayed	20	9.43%

When park use and gathering restrictions are lifted, what would you like to see?

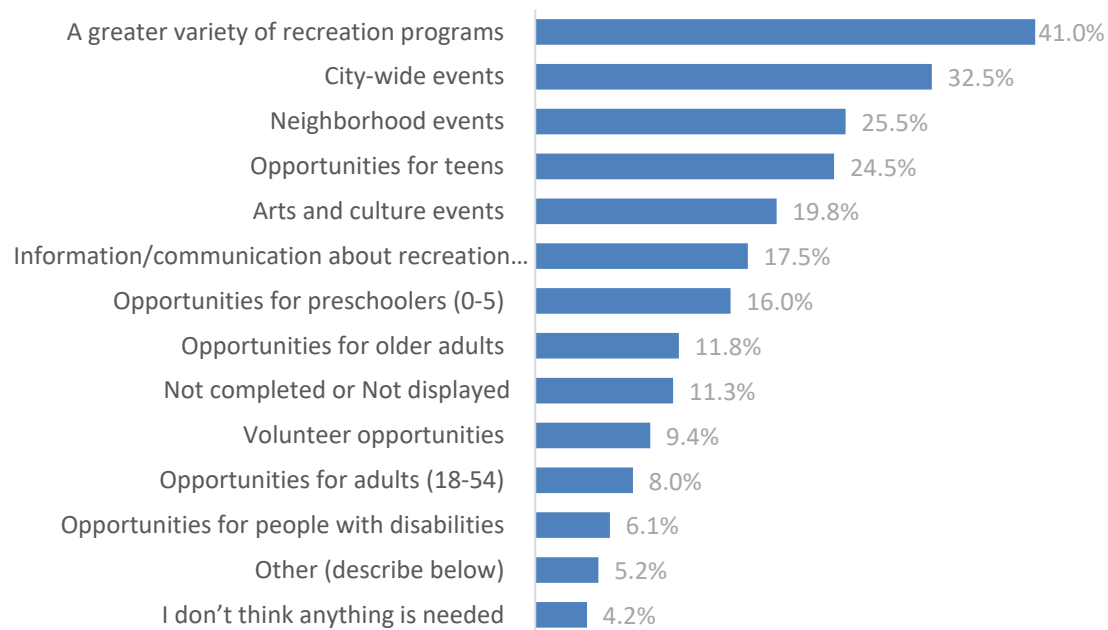
5. Which of the following park features and facilities would you like to see in Washougal? (Choose your top 3)



Answer	Count	Percentage
Interactive or unique play features (e.g. universal play, nature play, water play)	99	46.70%
Covered and indoor spaces	56	26.42%
Access to natural areas	106	50.00%
Fields, courts, and facilities for competitive sports	42	19.81%

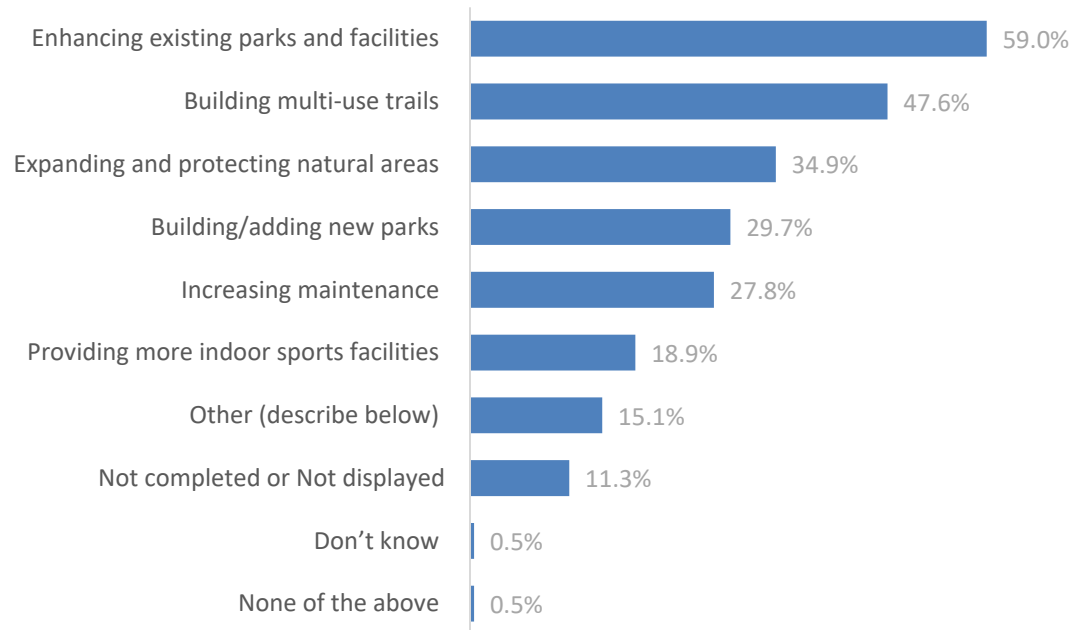
ADA accessible and inclusive recreation experiences	23	10.85%
Connected trails for walking, biking, running	132	62.26%
Other: See open-ended comments responses.	33	15.57%
I don't think anything is needed	1	0.47%
Not completed or Not displayed	24	11.32%

6. Which of the following recreation opportunities would you like to see in Washougal?
(Choose your top 3)



Answer	Count	Percentage
A greater variety of recreation programs	87	41.04%
Arts and culture events	42	19.81%
Neighborhood events	54	25.47%
City-wide events	69	32.55%
Volunteer opportunities	20	9.43%
Information/communication about recreation opportunities	37	17.45%
Opportunities for people with disabilities	13	6.13%
Opportunities for preschoolers (0-5)	34	16.04%
Opportunities for teens	52	24.53%
Opportunities for adults (18-54)	17	8.02%
Opportunities for older adults	25	11.79%
Other: See open-ended comments responses.	11	5.19%
I don't think anything is needed	9	4.25%
Not completed or Not displayed	24	11.32%

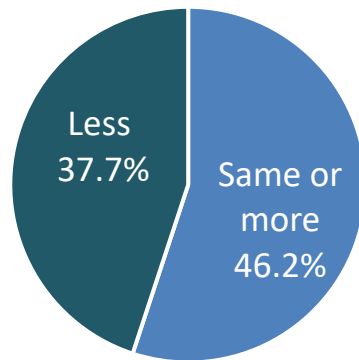
7. Which of the following should be our top funding priorities? (Choose your top 3)



Answer	Count	Percentage
Increasing maintenance	59	27.83%
Enhancing existing parks and facilities	125	58.96%
Building multi-use trails	101	47.64%
Building/adding new parks	63	29.72%
Expanding and protecting natural areas	74	34.91%
Providing more indoor sports facilities	40	18.87%
Other: See open-ended comments responses.	32	15.09%
None of the above	1	0.47%
Don't know	1	0.47%
Not completed or Not displayed	24	11.32%

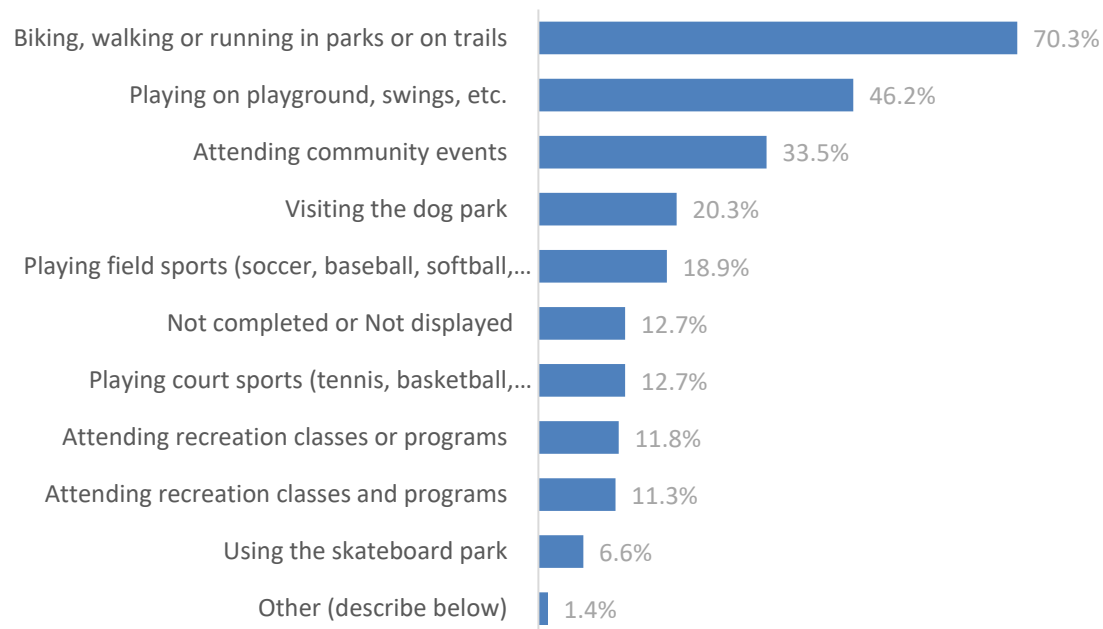
How has COVID-19 impacted how you use parks or recreate?

8. Compared to last year, which of the following best describes changes as a result of COVID-19 restrictions.



Answer	Count	Percentage
I'm using Washougal parks and trails more (publicly accessible/open parks and trails)	53	25.00%
I'm using parks, trails or recreation areas outside of Washougal more	18	8.49%
I'm using Washougal parks and trails less due to site closures or health concerns	57	26.89%
I'm doing less outdoors in general	23	10.85%
No change	27	12.74%
No answer	7	3.30%
Not completed or Not displayed	27	12.74%

9. What activities would you normally be participating in?



Answer	Count	Percentage
Biking, walking or running in parks or on trails	149	70.28%
Playing on playground, swings, etc.	98	46.23%
Playing field sports (soccer, baseball, softball, lacrosse, etc.)	40	18.87%
Playing court sports (tennis, basketball, pickleball, etc.)	27	12.74%
Attending recreation classes and programs	24	11.32%
Visiting the dog park	43	20.28%
Using the skateboard park	14	6.60%
Attending community events	71	33.49%
Attending recreation classes or programs	25	11.79%
Other: See open-ended comments responses.	3	1.42%
Not completed or Not displayed	27	12.74%

10. Have you experienced any positive changes that have taken place under COVID-19 restrictions?

See open-ended comments responses.

11. Do you have any other thoughts, comments or questions about Washougal's park and recreation system or this Master Plan?

See open-ended comments responses.

Finally, please tell us a little more about yourself (optional).

12. Do you live, work, or go to school in the City of Washougal? (Select any that apply)

Answer	Count	Percentage
I live in Washougal	195	91.98%
I work or attend school in Washougal	55	25.94%
I do not live, work or attend school in Washougal	5	2.36%
Not completed or Not displayed	5	2.36%

13. If you live in Washougal, how long have you lived here?

Answer	Count	Percentage
Less than 1 year	4	1.89%
1-5 years	50	23.58%
5-10 years	52	24.53%
More than 10 years	88	41.51%
No answer	1	0.47%
Not completed or Not displayed	17	8.02%

14. What is your age?

Answer	Count	Percentage
Under 18	0	0.00%
18-24	0	0.00%
25-34	27	12.74%
35-44	62	29.25%
45-54	24	11.32%
55-64	17	8.02%
65+	30	14.15%
No answer	24	11.32%
Not completed or Not displayed	28	13.21%

15. Do you have children living in your household?

Answer	Count	Percentage
Yes	114	53.77%
No	51	24.06%
No, but children are frequent visitors	17	8.02%
No answer	2	0.94%
Not completed or Not displayed	28	13.21%

16. Please indicate your gender:

Answer	Count	Percentage
Male	47	22.17%
Female	128	60.38%
Non-binary	1	0.47%
Prefer not to answer	6	2.83%
Other	2	0.94%
Not completed or Not displayed	28	13.21%

17. Most people think of themselves as belonging to a particular ethnic or racial group. How do you identify yourself? (Choose all that apply)

Answer	Count	Percentage
Caucasian/White (not Hispanic)	158	74.53%
African American/Black	1	0.47%
Hispanic/Latino	5	2.36%
Asian or Asian American	5	2.36%
Native American	3	1.42%
Other	9	4.25%
Not completed or Not displayed	28	13.21%

Open-ended Responses

The following provides responses to questions with an “other” or open-ended response option. Comments are unedited except where any personal information has been removed for confidentiality.

2. Prior to the novel coronavirus/COVID-19 park closures and gathering restrictions, how often did you go to the following to play, relax, exercise, or spend time with friends? What other places did you go?

- Lacamas lake
- Silver Falls area
- Lacamas Lake Park
- Camas parks
- Lacamas lake, cottonwood beach
- The trails between houses under the powerlines by W street.
- Not many
- Walking trails in neighborhood
- Washougal river, orchard hills golf club
- On the river!
- Steigerwald, Port Waterfront Trail and Boat launch.

- Lacamas Park and trails, Steigerwald National Wildlife Refuge, Ridgefield National Wildlife Refuge, Columbia Gorge trails
- School playground
- Cottonwood Beach
- Fisher Basin Park, Grass Valley Park, Gause & Hathaway Playground, Tech center park Vancouver
- The garden plots! We NEED garden spots!
- Hartwood
- Pacific Community Skate Park
- Prindle Park
- Steigerwald and Prindle
- Cottonwood
- Beacon Rock
- Hathaway Park
- We actually live up river, Skamania County, so Prindle Park.
- The dike and bird sanctuary
- Hathaway/Beaver
- Dog park
- Trail to LaCamas Lake & Washougal River bridge trail
- Dog Park frequently when we had one.
- walk in neighborhoods
- Walk the dike, Steigerwald before it closed
- Lacamas trail system. Not in Washougal
- State parks, long beach, mt Rainier....
- Lacamas Lake, Heritage Park , outside!!!
- Anywhere outdoors
- Neighborhood sidewalks
- Indoor skatepark in Washougal
- Dog park when we had one
- Lacamas Lake trails
- Sunset View Road Trailhead, Hathaway Park
- Waterfront
- Lacamas Park, Washougal River State Park, Steigerwald
- Lacamas Park, Washougal River state park, Steigerwald
- Cottonwood Beach
- Lacamas trail

- Gorge trails
- Wildlife Refuge
- Sandy Swimming Hole, Goot Park, Hathaway Park, and trails between Washougal and Camas
- Wildlife preserves, national and state parks and hiking trails
- Cottonwood beach
- Hathaway Park
- Campen creek park, the dike, Vancouver dog parks, camas parks
- The dog park when it was still around
- Lacamas lake and round lake
- vancouver parks / waterfront
- Cottonwood Beach, Steigerwald
- Steigerwald
- europe,ca, or
- The Dike trail, cottonwood beach, nature preserve, waterfront
- Any access areas to the washougal river
- Neighbor hood walks
- Area state parks, LaCamas Lake areas
- Round Lake and surrounding trails
- Steigerwald
- Cottonwood Beach
- Washougal waterfront park, Campen Creek Park
- Camas.....round lake, grass valley park, other parks in camas
- Red barn
- Library
- Schmitt family park with our dogs and kids
- Neighborhood parks
- CottonWood Beach
- Any outdoor space in the area.
- Pajamas.
- Washougal Waterfront
- The dike, Washougal river
- The local skatepark

3. Which park, trail, or facility is your favorite?

- Hartwood
- Schmid and Steamboat

- Lacamas Lake Park and Cottonwood Beach
- Cottonwood beach
- Steam boat
- Hartwood and Hathaway
- Lacamas, I love walking the trails there and taking my kids to play at the play structure
- The dyke trail. But it could be longer. It should extend into downtown.
- I enjoy the Washougal greenway
- The Barn Park
- William Clark Park
- Mable Kerr park trail
- MP 3
- Port Waterfront Trail
- Lacamas Park (creek trail)
- Hartwood park
- The red barn park (hartwood I think)
- River front area, Google Park, the Red Barn park area, and the school outdoor courts and fields.
- Strunk road
- Waterfront dike
- Heartwood park
- Fisher Basin Park & Grass Valley Park
- Lacamas and cottonwood
- Hardwood Park
- Hathaway is prob mu fav for the kids, but love the baseball field as our son is very involved in sports.
- Hartwood park
- Hathaway
- the tractor park
- Ega, sandy swimming hole, cottonwood trail
- Burnt bridge trail, parks in Portland area
- The trails on the dike
- The kids love Goot, but Prindle park is the closest park to us besides Cape Horn and Prindle could use an upgrade!
- Waterfront
- Hartwood and Steigerwald
- Washougal water front park

- Schmid
- Upper Hathaway
- Hathaway park
- Lewis and Clark trail from Steamboat landing to Stiergwald Refuge
- Dike, trail from barn park, walking at Schmidt family park
- Washougal Waterfront, Hartwood Park
- William Clark Regional Park and Lacamas Lake and Round Lake Parks
- Washougal River Greenway Trail
- Goot, sasquatch, hartwood, captain william clark
- Dike
- Goot Park
- Hartwood
- Hardwood is awesome obviously a swing set and more cool stuff for kids and everybody would be awesome but my kids love it and so do the other kids. We have a 2 year old and a 7 month old. I regularly find myself driving to camas to go to some of the bigger playgrounds like grass valley and camas elementary schools have bigger better playgrounds which is fair since it's camas so no knock on washougal elementary schools parks at all. Obviously cotton wood is incredible and what you guys did with the waterfront area and the Sasquatch park is incredible absolutely incredible I'm so proud to live here and will never leave after moving from Portland 5 years ago. The one thing I've told myself is I need to get more involved with parks and schools in washougal and that's my goal the next years to come thanks for all you do I know Facebook and social media can be a really negative and I know a lot of old time shoug people can be really negative watching their small town grow but stick with the awesome things you guys are doing you're doing a great job. Let's capitalize on the amazing opportunities and land we have hear and build something the community can be proud of like you guys are already doing!
- Not sure
- Park near Hathaway School
- Kerr
- Trail and space by farm park and trail along columbia river
- William Clark Regional Park
- William Clark Regional Park
- Farm park, Cottonwood Beach, Washougal-Camas water front
- Washougal Trail, waterfront, cottonwood, hartwood
- Dog park when we had one.
- nearby the lacamas creek trail in camas, in washougal, cottonwood beach
- Trials outside of core city line Dike etc.
- levee trail
- Kerr park

- Lacamas trail system. Not in Washougal
- Mabel Kerr
- Hartwood
- Dike trail
- washougal waterfront park
- Goot park trail, Hathaway boat launch, any park on the river
- Cottonwood Beach and Hartwood Park
- Hathaway Park and William Clark Park
- Fallen Leaf Lake in Camas
- Campen Creek, Hathaway Park, Sunset View area and trail
- The Dike and Cottonwood Beach
- Sunset View Road Trailhead or Schmid Family Park
- Dike
- Steamboat Landing
- Steigerwald, Lacamas Park, Washougal River Greenway trail system, Dike path, pedestrian tunnel by Pendleton
- Steigerwald, Washougal River greenway trail system, dike path, pedestrian tunnel at Pendleton, steamboat landing
- Impossible to pick! We are blessed with a great variety. Our family uses the dike trail, Washougal Waterfront Park, Washougal Greenway trail, and Schmid Family park the most but that's not to say we shouldn't spend time at the others.
- Waterfront Park, Dike Trail
- The new waterfront trail and park is our favorite. I would love more like that. A skate park near by the waterfront would be amazing. Another park geared towards older kids would be awesome too
- Barn park
- Hartwood-Eldridge, Mable Kerr, Schmid Family
- Lacamas
- Cottonwood Beach and trails
- Hathaway park
- Waterfront, cottonwood, steamboat
- Gosh too many to decide
- Kerr Park
- Sandy Swimming Hole
- Goot park /lacamas lake trails
- Cottonwood beach

- The Dike
- Captain William Clark Park
- Cottonwood beach
- Sandy swimming hole
- Lacamas
- Hartwood
- Waterfront
- Washougal Greenway Trail
- Steigerwald
- hathaway
- Goot
- Hartwood park
- Sasquatch play park, barn park, hathaway, lacamas lake
- Too many to name, we did all over hathaway, Clark park, the farm park, Goot, and Elizabeth park.
- Waterfront @ Parkers Landing, Eldridge Park trail, Cotton Wood Beach or call it the Dike.
- Hartwood Park, it has both trails and a play structure. It is also closer to where I live.
- Waterfront, Greenway, Oak Tree
- William Clark Regional Park
- Oak Tree Park
- all
- Round lake and surround trails
- Lacamas lake trail
- The one that starts at 42nd and connects the two parks.
- Heartwood or Goot park but I would love more options.
- Steigerwald
- Hathaway
- Sandy Swimming Hole, Cottonwood Beach, Bike trail
- William Clark Park
- Round lake
- All are very basic I'd honestly rather go to camas parks
- Washougal Waterfront Park for walking and my kids love Hartwood Park and Hathaway Park
- Steigerwald lake refuge
- Hamlik park
- Washougal Port

- Got Park
- Cottonwood Beach, Barn park (for the kids)
- Hartwood Park or the washougal River greenway
- As my kids call it, "the Bigfoot Park"
- The dike and Cottonwood Beach
- Hartwood Park, Elizabeth Park, Sasquatch Park and Washougal Waterfront
- Dike trail, Steigerwald
- Waterfront Trail

5. What other park features and facilities would you like to see?

- Dog Park
- Dog park
- Restrooms that are clean or even a restroom at hartwood
- I think Washougal does a great job with the parks, would like to see Washougal step up and aid in the improvement of the Camas Washougal Riverside Skatepark
- Small but numerous neighborhood parks -- 1/2 court basketball, small skate facility, wall for handball or tennis or pickle ball. Get the kids and their hoops, or goals out of the street
- Dog park
- Bring back a dog park
- Indoor skating rink like oaks park in Portland Oregon or the rink in Tacoma
- Dog park or off leash area
- Horseback riding
- Splash pad.
- We need an off leash dog park
- Off leash dog park!
- Dog park
- fenced dog park. Schmid park could easily be fenced on the fourth side(already fenced on 3 sides) to make a safe place for dogs to be off leash
- Dog park
- I would like to see as part of the Park/waterfront development a gym/pool/meeting space/outdoor . . .
- A dog park - this would be a wonderful social space!
- Off leash dog park
- Dog Park and Community Garden
- I would love to see a dog park in Washougal!!
- I would like to see "park" options geared towards older kids. A nice skate park would be good too.

- Dog park
- Off-leash dog park PLEASE!!!!
- Off leash dog park
- I would like to see sidewalks on Shepherd so Sandy swimming hole and other neighborhood parks are accessible without having to drive.
- Water sprinklers for hot days
- Dedicated bike lanes to get to them.
- Dog park or off leash areas
- Disk Golf
- Restroom! At the park on 49th, near the children's play area
- I would love to see a local, professionally built, (by a legit skatepark builder) skatepark IN Washougal, for the people of Washougal. Skateboarding is in the next Olympics. It's time for Washougal to get up to speed with what other cities have. Ours could even be superior...
- Skatepark

6. What other recreation opportunities would you like to see?

- Dog Park
- small areas for basketball soccer, racquets, etc. within easy walking distance for kids.
- Dog park
- I would like to see the skate park be turned into a place where kids and adults would love to congregate...I have been thinking of this great idea since I moved here. Please contact me for details!
- Garden plots
- Dog park
- Off-leash dog park, PLEASE!!!
- Opportunities for families or all she groups
- Arcade, skating rink, bowling alley, anything kids can do indoors
- DOG PARK!
- Once again, a well built, professional skatepark.

7. What other top funding priorities do you suggest?

- Dog Park
- S place for dog to run
- New small neighborhood play areas -- get the kids off the streets These can be part of the development code for new development.
- Dog park
- Dog park
- There are so many schools with their own indoor gym...focus on the beautiful outdoors...natural outdoors!!! Go to Tacoma and see what they did with their waterfront...they really did a great

job connecting the waterfront with Pt. defiance without the shops washougal could be a great place and example how to keep nature in tact but make it accesible to all and make all those proud to want to take care of it too!

- splash pad or similar...outdoor water feature for kids to run through
- Garden Plots
- Off leash dog park and horseback riding trails
- Increasing security considering the homeless and drug users who frequent many of the trails and parks.
- Off leash dog park please!
- Dog park
- Please fund a simple off leash dog park. People are letting dogs off leash in parks because there is not a designated space which puts those of us who keep our dogs on leash in parks at risk.
- Dog park
- Creating a Washougal dog park
- More access for handicapped and wheelchair bound people.
- Dog park
- Off-leash dog park, PLEASE!!!
- Improving addy St pump track
- Totally unrelated to parks. Invest in stricter property standard enforcement. Residents and potential future residents will gain a far more positive perception of Washougal if Property standards are enforced. City council members ought to drive around the neighborhoods of Washougal...if they were not embarrassed by numerous homes and the trash and junk surrounding them, then they really don't care about the look of the city.
- Dog park
- Building interconnected/linked trails and pathways. Creating opportunities to walk or cycle instead of driving.
- Maintenance of what you have. Quit adding if you can't maintain existing
- Dedicated bike Lanes throughout the city to enjoy our Parks and recreation.
- Please open and maintain restrooms!!!!!!!
- Disk golf will draw a lot of people into the area for the sport, increasing retail business in the area.
- Restrooms
- Dog parks
- DOG PARK!
- A community center such as firstenberg.
- A new skatepark
- Implementing recreation programs for residents

9. What other activities would you normally have been participating in?

- Horseback riding
- Visiting calming, scenic areas with my wife and fishing or water activities
- Indoor swimming

10. Have you experienced any positive changes that have taken place under COVID-19 restrictions?

- Working from home
- more time at home with family
- "A lot more walks and bike rides."
- No
- More time on trails
- More people using the trails and being considerate of others.
- Absolutely none in regards to the city of washougal. (Not your fault!)
- My kids have been riding bikes more in our neighborhood. Our road is usually busy through Sunset Ridge (school traffic from buses and parent/staff) and now the kids can ride bikes, scooters etc. Without cars speeding by every few minutes.
- Nope
- Not at all. The populous has never been more oppressed in terms of basic rights and necessities.
- More time spent with family but no other positives in this community.
- No
- No
- It's been nice to recharge our family bond with less activities available (due to COVID 19) but it was hard to connect and be active outside because of the closures. It was a win/lose situation.
- More time with faamily on walks in my neighborhood.
- No.
- No!
- quality family time became more significant
- We take more walks in our neighborhood
- "More focus on our garden."
- More time with family
- More time with family and at home. Focusing on taking care of our home and gardening, the people that matter the most. The kids are doing well in my family.
- No...city has used Covid Virus as an excuse to let things go
- Just realizing we are lucky to live in an area where the outdoors is so accessible. We have gotten out and hit Lacamas lake trail 20+ times Cotten wood beach washougal waterfront park all of it.
- Yes, I owe less income tax because I have less income.
- Less noise and people

- We need more sidewalks please
- No
- Neighbors are home more.
- "Getting more done at home. I don't think the Schmidt property should be developed For baseball or other team sports. I think the noise level to the neighbors and nearby wildlife habitat will be significant and disruptive. Covid May limit this Anyway but long term could something else be planned for that space?"
- None
- None
- No
- I see a lot more people using the parks and trailheads than before COVID19.
- Working from home and avoiding a pointless commute
- No
- No
- No
- We have gone outside more. Since we aren't as busy with other activities we have more time to go for walks, bike rides and things like that.
- It seems that some people are more aware of hygiene.
- People are out walking more.
- NO
- Less people out when I have to walk my dog. People staying away
- My cooking/baking game is on point
- NO
- Signs were placed in my neighborhood to prevent people from parking to access Sandy swimming hole but it was still too crowded to be safe so we avoided it.
- More time with my family
- No
- no
- More people appear to be getting outdoors .. cabin fever'll do that to ya, I suppose.
- No
- less people at parks!
- Only that I have spent more time in the mountains due to people not taking social distancing precautions at parks or ripping down caution tape off playground equipment. So spent a lot more time in isolated areas off of the washougal River, which has helped the whole family cope.
- No closing parks has been terrible for my kids. They need the outdoor play and use of community playgrounds and courts.

- More time with family. We get outside and use these facilities more. We have made use of these parks, etc., a habit and will continue using them even when restrictions are removed.
- No, less maintenance means parks and trails have been littered and overgrown.
- I walk more and would like more trails in Washougal like Round Lake and its surrounding trails
- No
- No...none. Access to the outdoors helps with mental health...for our children too
- Nope. Of course Steigerwald has to be closed for renovation when COVID hit. It was the perfect place to reduce stress.
- Mainly walking my dog around the park more
- Not as a result from the city of Washougal
- No not really, our president is a Fascist Scumbag and our town is full of terrorist like proud boys/patriot prayer. We really need to shut down "Limitless America" for their affiliation with domestic terror groups. Want to make the town better? Get rid of the domestic terrorist! Its disgusting and has me questioning living here.
- My kids are dying to play on a playground, especially whenever they see others being allowed to do so regardless of social distancing or mask mandates.
- Parks are cleaner. I have gotten the chance to go to more parks that I hadn't visited before.
- It's been nice to see people outside more.
- No

16. Please indicate your gender:

- Why is this even a question?
- Non-binary femme

17. Most people think of themselves as belonging to a particular ethnic or racial group. How do you identify yourself? (Choose all that apply)

- human
- I am a melting pot of ethnicities
- Why is this even a question?
- N/A
- Human
- human
- Human
- American
- Human, why does the color of my skin affect my answers in this context?

11. Do you have any other thoughts, comments or questions about Washougal's park and recreation system or this Master Plan?

- Park Maintenance needs to improve.

- More places for little kids to play safely. Please get rid of all the nasty run down bars..there is one on every corner. Put in more family things like output golf. Add more fun things to the parks here. The parks have very limited play areas.
- Thank you for the opportunity to provide feedback.
- I believe helping Camas fund improvements to the Camas Washougal Riverside Skatepark and share continued maintenance once improved.
- Please finish bike part at Hammlick and enhance skate park
- If we. include Steigerwald and Captain Clark and Schmidt Family Park we have plenty big open spaces. What we are missing is places within the neighborhoods, within easy walking distance for children, tweens, and teens to play.
- I would like to see a lot more hiking trails and connection of existing trails.
- Keep up the good work! We love visiting the parks in washougal! It's so integral to children's development.
- The community needs a dog park.
- Would love to see more pickleball courts, more sports fields for kids and community youth activities.
- Splash pad, dog park, more play equipment,
- We love Fisher Basin Park in Vancouver. I would like a park that has everything. Play structures (swings, tire swing, monkey bars, climbing tower and bridge etc.) Bathrooms, picnic tables, basketball courts and grass fiels for soccer or whiffle ball. Attract families to spend the day at the park and then spend their money at shops and restaurants in town!
- Better access to Hartwood and Campen Creek Park from neighborhoods north/northwest of the parks (off of Y and W street) is needed.
- improve what we have, more options for teens and young children including things for people with disabilities so they can be included in activities within out community.
- I would like to see accessibility to Hartwood park from the opposite side of Campen Creek. I know you can access from Campen Creek Park but it would be beneficial to other neighborhoods to have closer access from W street.
- I love the pickle ball opportunity at Hathaway Wolfe courts. More upgrades to the surface would be highly appreciated. An indoor facility for pickle ball during bad weather would also be high on my list of priorities
- Please add back the garden plots. Every single space by the tennis courts were being used. It is great for kids to learn, some of us have too much shade inour yards to grow veggies.
- There are no parks north of W street. When is the city going to focus on expanding north of W street? All the open land west of the Columbia view neighborhood would be suitable for a park? Anything between W street and 34th would be logical.
- Building a decent skatepark please and a water play area. There is no reason Washougal doesn't have these options for youth considering smaller communities (Culver, Oregon) do.
- Please upgrade the equipment at Prindle park. It's a perfect spot for a natural playground.
- Would love to see trails in a more natural setting with trees and along water.

- We live to play and watch baseball. Would love to see Schmidt fields improved more.
- Reinforce littering law and keep our nature area clean and safe for the wildlife
- It would be great to see an expansion of the baseball fields/program. As well as a theatre program/resources for our youth.
- Splash pad for wet summer fun.
- Washougal is my hometown. I do not live there anymore, but visit at least twice a month. I want my children to have the same experiences I had as a child. I don't want Washougal parks and trails to turn into something like Vancouver or Portland where there are homeless people and trash and vandalism. I want them to be able to enjoy nature in a safe environment.
- I think overall..Washougal is heading in the right direction
- If you choose to make a dog park, make it fenced in. We live near Schmidt family Park, and too many people use it as an off lease dog park. I go to walk, and can't take my dogs because I worry about other dogs scaring them. My dogs are leashed and it scares them when large unleashed dogs come at them barking. I just want to walk my leashed dog and not worry about unleashed animals. Not everyone likes to visit dog parks...me included.
- Please check out "First Federal Bank Park" in Twin Falls, Idaho. It has so many awesome ideas that include inclusive play for kids with disability, creative/ active play, and community get togethers.
- Keep up the good work!
- We need more bike trails
- Paying to have yet another Master Plan done is a total waste of money. Master plans are just that, a plan... is never completed because of lack of funds when thousands have been blown to a company that someone working for the city knows.
- I would love to be involved more. Having two kids that are going to grow up here I just want them to have all the same opportunities the Camas kids have. Washougal is growing and is such an incredible place to live when the waterfront development is done I'm just so excited to have my family grow here and invest in Washougal everything. Once again and I'm sure you know this Schmid park has the potential to be a game changer for the city and could be incredible and has to be a major priority on the master plan as well as expanding and adding to Heartwood and Hathaway park though it's in a lower economic area is screaming to be updated and expanded that place could be incredible in the summer time with a massive updated playground and better seating and a well thought out design upper and lower. Thanks
- Repairing root damage and settled areas on the trails would make them much better.
- Basketball hoops, wall ball, side walks!, splash pad, trails all interconnected,
- A splash pad would be so great!
- Please bring back the Dog park. :)
- I think it is nice for communities if their parks have easily accessible ways for public to volunteer with park staff to guide-spring clean up, ivy pulls, etc.
- See previous comment about Schmidt park. Please do not develop this into a community sports area. Too noisy for those living nearby.

- Please consider finding a space for a dog park!
- What trails does Washougal have north of the Columbia?? Am I missing something?? Thanks.
- "My priorities 1) enlarge Mabel Kerr park 2) build a dog park 3) sidewalk between Mabel Kerr, sunset ridge, and the ball fields by school admin building "
- I was enjoying this survey until it asked for my gender and race...which you have no business taking into account with a survey like this. Seriously...are we categorizing these answers based on sex or race? Come on people. Rant over. We love Washougal parks.
- It would be nice if the Port of Camas-Washougal and the City could work cooperatively to improve our recreational experience!
- Disturbed that people with dogs don't pick up after their animals. Have stepped in waste on several occasions when off paths. Need to fine people that don't follow the rules. Unfortunately, some park users don't seem to care and use our parks as animal waste dumping grounds. Needs to be addressed for health and sanitary reasons.
- No
- Please please stop spraying in our parks. Please start using green maintenance practices. Pesticides and fertilizers are not safe for anyone, especially our children and pets!! They are also harmful to our watershed and wildlife. If I could choose one thing to do differently in our parks this would be it!
- The parks keep deteriorating and maintenance isn't being addressed. The weeds, lack of water and aging equipment is not being addressed enough.
- I think the parks and trailheads are very important and make this town much more appealing. If you reduce the parks Washougal just becomes another town. I stay here in Washougal because there are so many parks and natural areas to spend time in.
- I'm concerned about the graffiti I've seen at Steamboat Landing at times, though I'm not sure what can be done about it. A website to report and signs to inform the public about how to report it would help to quickly address it when it happens though.
- I treasure the amazing park system in Washougal. Thank you for making it a priority in city planning. Hope that preservation of wild places will always be valued...hope that more land can be acquired and preserved as park, open space etc.
- Love our Washougal parks. Thank you for making them a priority
- I would love to know if there are serious plans to connect the dike trail with the Washougal Waterfront Park trail. That would be amazing! Thank you for all that you do. ❤️ You help make this an amazing place to live.
- Would love to see community gardens and a dog park in the City of Washougal.
- Put swings in at Hamilton park
- I noticed one option in your survey mentioned a dog park. We moved here two years ago, and were under the impression that the one and only dog park closed. Is there a dog park??
- I would like to see an expansion of trails and interconnected wildlife corridors between parks (for instance, a trail connecting Hathaway to Schmid Family)
- Please create an off-leash dog park! Please!!! :)

- Community pool would be wonderful
- I'd like to see a community gardens return to the neighborhood parks. It's a wonderful opportunity to meet people and help others enjoy fresh food.
- "Need to find a solution for the unsatisfactory parking and pedestrian safety around the Sandy Swimming Hole area. Need to resurrect the Community Center study initiative, and find a city strategy to get past the Camas bond debacle that ""poisoned the well of public opinion"" in the eastern county area."
- We desperately need a dog park!
- I would love to see a trail/bridge going over Campen Creek to connect Hartwood Park to the neighborhood to the West to make it accessible by foot by those of us in that neighborhood :)
- Use the great potential of the donated Schmid property along 32nd.
- The closest park to us is Sandy swimming hole. There are no playgrounds or fields for play that are safely accessible to walk or bike to because Shepherd doesn't have sidewalks the entire length. My child goes to Hathaway and there is no way she could ever safely walk or bike to school. Our neighborhood is virtually cut off because there have been many homes added to the area but Shepherd hasn't been expanded or improved to handle the extra flow of vehicles. Please solve these issues.
- It would be nice to see the parks / trails connected through a series of safe pedestrian and cycling trails or sidewalks. It would be great if there were a proper skate park like the one at Pacific Community Park in Vancouver. Also having open gym times during the winter months at the public schools would be a great opportunity to get kids and families out of the house.
- When able town hall or community forums.
- "A nice downtown park, somewhere along Main street, would be very nice - especially if it could connect to the greenway somehow."
- I would like more information regarding the long range waterfront development.
- Please stop building parks when you cannot maintain what you already have. More doesn't mean better. I'd rather have 1 nice park than 10 crappy ones!
- City needs more dedicated bike lanes to travel safely throughout the city.
- Let me know how I can get involved.
- Need more programs for whole families to take part in, please keep religion out of sponsorship, and we need access to the bathrooms year-round and paid maintenance to keep them clean and safe. It's ridiculous we can't take our little ones to go potty when we're at a playground or a park. Hire people to keep us safe and clean when enjoying our city parks.
- Washougal would really benefit from a community pool and recreation facility with indoor courts instead of forcing the commute travel to Vancouver or Portland for such activities.
- Will Schmid Family Memorial Park be developed or will it remain as it is? Also, if developed, will sidewalks be put in as well?
- Please keep Oak Tree park maintained

- Not only do I love disc golf, but I know that it attracts people here which increases business in the area. There are a number of places where a great course could be set up and maintained. When done around other parks, it makes for great multi-use areas.
- I understand from park employees that workers have been cut or furloughed so maintenance/watering is down, however taxes have not gone down. How is that? I also see that many new homes are being built meaning more people in these spaces. There will be many more dollars from their taxes as well. I hope to see improvement soon.
- Publish your plans somewhere where residents can find and see them. We hear rumors all the time about planned trails or revisions but there is no obvious area on the city website that describes any of this.
- Places for teens like a teen center and splash area or water involved for summer months would be great.
- I have seen other parks with a tandem child/parent interactive swing. I think each park needs one or two. I would love to interact with me child like this rather than just standing behind pushing.
- Really could use a massive splash pad.
- A new playground that is cool like east vancouver's that isn't just geared towards toddlers. Also, Camas messed up the public pool thing...why doesn't Washougal step up and do it right? More hiking trails....are there even hiking trails in a forest in washougal....or are they a secret? Maybe one, but it's not taken care of very well. I'm afraid of meth heads, and I worry my kid will find needles on the play grounds again...so yeah, we have had to go to Camas and East Vancouver.
- Everything seems very basic and built as (that's all we have funded or that's all the grant money)
- More trails. Keep Washougal natural and wildlife friendly. There aren't that many wildlife refuges left that visitors can meander through.
- Would like to see a dog park at hamlik park so that people won't use the baseball park for their dogs.
- Please take into consideration the results of this survey . Washougal needs more community events as well as places where kids can play without fear of transients or illegal activity.
- We need more family and teen community activities and areas more than a skate park.
- add a dog park (near the highschool) and get rid of business's that openly support domestic terrorism
- I think you should add bathrooms and a splash pad at the Bigfoot park playground area.
- We need bathrooms at more parks. Also, a community recreational facility would be amazing!
- "We love the waterfront trail. We only wish that it was longer.I'd love to see a new skatepark built IN Washougal, so that it was more easily accessible to Washougal locals. The current skatepark is extremely subpar, and for a kid without transportation it might as well be in another state. If something new was out of the question, Washougal could at the very least contribute to the update plan that Camas has gotten on board with, at the existing park. I know that there is currently a small pay indoor park, but it will only hold a few people at once, and who knows how long it will last. I skateboard at a high level, and my children also skate. Current

we have to go to other cities to do what we love. Something off of the waterfront trail could be cool, or something even closer in."

- The skatepark is horrendous. The planners obviously had zero experience and wasted money on it. Please put money into expanding and fix the issues. There would be a big presence of interest and support.

Comprehensive Park & Recreation Plan

APPENDIX C: CAPITAL PROJECT LIST

This page intentionally left blank

Appendix C: Capital Projects List

	Acres	Trail Miles	Project Type												Total Capital Cost	Total Capital Reinvestment/ Replacement Cost	Maintenance	
			Park or facility repair/ replacement	Shelter repair/replacement	Play enhancement	Utilities	Trail or pathway improvement	Accessibility improvements (ADA)	Landscape or tree improvements	Improved signage	New or upgraded restroom and user amenities	Planning and design	Other added facility or improvement	Site development and construction			Tier	Total Average Annual Cost
NEIGHBORHOOD PARKS																		
Elizabeth Park	1.8		•	•			•	•	•	•			•		\$ 150,000	\$ 3,600	2	\$ 13,500
Hartwood Park	7.0			•		•			•	•	•	•			\$ 2,901,000	\$ 14,000	2	\$ 52,500
Hamllik Park	5.0		•	•	•	•	•						•		\$ 284,000	\$ 10,000	2	\$ 37,500
Oak Tree Park	2.8			•	•			•	•	•					\$ 302,000	\$ 5,560	2	\$ 20,900
River Bend Park	0.6														-	-	3	\$ 2,800
Total Neighborhood Parks	17.6														\$ 3,637,000	\$ 33,160		\$ 127,200
COMMUNITY PARKS																		
Hathaway Park (upper and lower)	15.8		•	•	•	•	•	•		•	•	•	•		\$ 1,596,000	\$ 63,200	1	\$ 158,000
Schmid Family Park	17.8			•	•	•	•		•	•	•	•	•	•	\$ 10,640,000	\$ 71,240	1	\$ 178,100
Total Community Parks	33.6														\$ 12,236,000	\$ 134,440		\$ 336,100
SPECIAL USE AREAS																		
Camas/Washougal Skate Park	1.4												•		\$ 75,000	\$ 5,760	1	\$ 14,400
Downtown Park and Community Garden	0.4				•	•						•	•	•	\$ 494,000	\$ 1,600	2	\$ 3,000
George Schmid Memorial Park	4.0														-	-	2	\$ 30,000
Reflection Plaza	0.3		•								•				\$ 111,000	\$ 1,000	1	\$ 2,500
Washougal Memorial Cemetery	12.1														-	-	-	-
Total Special Use Areas	18.2														\$ 680,000	\$ 8,360		\$ 49,900
WATERFRONT PARKS																		
Sandy Swimming Hole	0.9						•	•		•	•		•		\$ 1,071,000	\$ 1,880	2	\$ 7,100
Steamboat Landing	1.6					•		•		•	•		•		\$ 346,000	\$ 6,400	1	\$ 16,000
Total Waterfront Parks	2.5														\$ 1,417,000	\$ 8,280		\$ 23,100
Total Developed Parks	71.9														\$ 17,970,000	\$ 184,240		\$ 536,300

Appendix C: Capital Projects List

	Acres	Trail Miles	Park or facility repair/ replacement	Shelter repair/replacement	Play enhancement	Utilities	Trail or pathway improvement	Accessibility improvements (ADA)	Landscape or tree improvements	Improved signage	New or upgraded restroom and user amenities	Planning and design	Other added facility or improvement	Site development and construction	Total Capital Cost	Total Capital Reinvestment/ Replacement Cost	Tier	Total Average Annual Cost
NATURAL PARKS																		
Campen Creek Park/Eldridge Park	4.5		•				•	•		•			•		\$ 252,000	-	4	\$ 11,300
Kerr Park	13.7						•		•			•			\$ 100,000	-	4	\$ 17,200
Total Natural Parks	19.9														\$ 352,000	-		\$ 28,500
Total Existing	91.8														\$ 18,322,000	\$ 184,240		\$ 564,800
NEW PARKS AND FACILITIES																		
Granite Highlands Park (Neighborhood Park)	0.9													•	-	\$ 1,880	3	\$ 4,700
Ninebark Park (Waterfront Park)	2.0													•	-	\$ 8,000	2	\$ 15,000
Future Community Park (CP)*	8.0													•	\$ 4,000,000	\$ 32,000	1	\$ 80,000
Future Neighborhood Park 1 (NP1)*	3.0													•	\$ 2,000,000	\$ 6,000	2	\$ 22,500
Future Neighborhood Park 2 (NP 2)*	3.0													•	\$ 2,000,000	\$ 6,000	2	\$ 22,500
Future Waterfront Park (WP)*	2.0													•	\$ 2,750,000	\$ 4,000	3	\$ 10,000
Columbia River Trail**	-	0.8												•	\$ 191,000	-	1	\$ 7,500
Jemtegaard School Trail**	-	0.5												•	\$ 127,000	-	1	\$ 5,000
New Community Garden*	0.5					•			•	•			•	•	\$ 50,000	\$ 1,000	3	\$ 1,300
New Off-leash Dog Area*	2.0					•			•	•			•	•	\$ 500,000	\$ 4,000	2	\$ 15,000
Total New Parks and Facilities	21.4														\$ 11,618,000	\$ 62,880		\$ 183,500
Total Existing and Future	113.2														\$ 29,940,000	\$ 247,120		\$ 748,300

Notes: * General acreage assumptions provided. Actual acreage may vary. ** General trail mileage assumption provided. Actual mileage may vary.

Comprehensive Park & Recreation Plan

APPENDIX D: SITE AND FACILITY RECOMMENDATIONS

This page intentionally left blank

Comprehensive Park & Recreation Plan

APPENDIX D: SITE AND FACILITY RECOMMENDATIONS

This page intentionally left blank

Appendix D: Site and Facility Recommendations

The planning process identified improvements and recommendations for nearly all existing parks and facilities, as well as several new parks and recreation areas. The Site and Facility Recommendations provide direction for the City's capital project list (Chapter 5), as well as additional recommendations and considerations for future investments and regional partnership opportunities.

NEIGHBORHOOD PARKS

Elizabeth Park

Elizabeth Park serves older established neighborhoods on the west side of town between "E" Street and the Washougal River Road. Although access to the park does not meet design and development guidelines, the site serves an important need in the community for playgrounds and open space. Site design and development guided by a landscape design professional may transform this neighborhood park into a viable trail and recreation link in this portion of the City. Recommendations for Elizabeth Park include:

- Increase visibility of the park through additional signage and improved access paths from surrounding street right-of way.
- Establish a tree-planting program and planting plan.
- Improve the basketball court to include all-weather netting, adding a full court, painting the lines, etc.
- Add a cover to the play area and a picnic shelter to increase year-round use of the park.

Additional Considerations

- Consider adding a community garden in this park.
- With the assistance of a landscape professional, prepare a master plan for the site.
- Keep options open to acquire adjacent properties to provide additional access into the park for increased public use and trail linkage possibilities.
- Convert patchy lawn areas into "no-mow zones" by removing sod and seeding with a shade wildflower mix.
- Identify areas for community art or educational displays pertinent to geological or historical features.

- Consider adding user friendly, ADA accessible amenities, such as additional play features, a bicycle rack, updated signage, improved seating, etc.

Hamllik Park

Hamllik Park is located on the southeast side of Washougal. Because of its remote location, Hamllik is particularly important for nearby residents who are separated from easy access to other parks by the railroad tracks. Recommendations for Hamllik Park include:

- Clean and repair buildings.
- Install more and better amenities, including picnic tables, barbecues, bicycle racks, water fountains, benches, and trash cans.
- Make athletic field improvements, including irrigation, refurbishing the dugouts with new roof structures.
- Make playground improvements, including providing a cover to the playground.
- Implement the master plan for the site to complete the Washougal Bike Park.
- Install new sport facilities, such as a basketball court, trailside athletic pieces, or bicycle skills course/pump track.

Additional Considerations

- Consider adding an area for community art or educational piece.
- Continue to expand and refine the “no-mow” zones to ease maintenance costs and improve habitat for wildlife.
- Renovate or replace the restrooms at the park. Optimum siting of these facilities should also be considered in the master plan.
- Create accessible routes into and through the park. This work entails installing ramps and sidewalks compliant with ADA.
- Improve the landscaping, especially by adding trees.
- Consider adding a spray park element.

Hartwood Park

The City of Washougal acquired this property in 2011 with Park Impact Fees, Washington Wildlife and Recreation Program – Recreation and Conservation Office, and Legacy Lands - Clark County Conservation Futures grant. This neighborhood park serves the northeast side of Campen Creek in the vicinity of SE 49th Street. While this site sits adjacent to the other City of Washougal “natural parks” known as

the Campen Creek Greenway, Hartwood Park is the only of these park properties built with playground equipment and other park structures typical of a neighborhood park. Recommendations for Hartwood Park include:

- Develop a site master plan to guide comprehensive site improvements
- Add more user friendly, ADA accessible amenities, such as additional play features, a bicycle rack, restrooms, improved parking, etc.
- Develop a structure suitable for events and as a wedding venue.
- Provide parking lot improvements.

Additional Considerations

- Provide trail linkages to other off-site properties to the North as development occurs.
- Develop a trail connection to “W” Street via the waterline easement or alternate routes through green spaces. This trail connection project includes the construction of bridges and boardwalks.
- Develop “no mow” zones with tall grass or by incorporating wildflowers into the design to conserve resources and ease maintenance requirements.
- Plan areas designated for community art or educational illustration.
- Continue expanding the community orchard.
- Complete the playground by enclosing the north boundary with concrete blocks acquired by the parks department for this project.

Oak Tree Park

As a part of the “Look Out Ridge” subdivision development, the developer created a two-plus acre park in exchange for impact fee credits. Oak Tree Park overlooks the western edge of the City of Washougal, the Columbia and Washougal Rivers, the mouth of the Columbia River Gorge, and views Mt. Hood. Designed by Walsh & Associates, Oak Tree Park showcases native Oregon White Oak throughout the site. Site amenities include an asphalt path, picnic tables, benches, and a playground. Recommendations for Oak Tree Park include:

- Add a new playground.
- Incorporate a covered shelter with water, electrical service, and/or restrooms to expand services in this neighborhood.
- Add user friendly, ADA accessible amenities, such as additional play features, a bicycle rack, updated signage, improved seating, etc.

Additional Considerations

- Incorporate “no-mow” zones in the yet undeveloped areas of the park, particularly protecting and expanding the Camas Lily out crop growing on the slope to the south of the park. The lilies could provide an excellent opportunity for interpretive signage.
- Provide linkages between the park and the citywide trail system.
- Implement community art into the existing design or develop a means to infuse educational or interpretive elements to the park

River Bend Park

River Bend Park, located at the west boundary of town, offers a viewpoint of the Washougal River. The park currently contains picnic tables and benches, but no other neighborhood park amenities. River Bend Park serves as a neighborhood park for nearby residents. With planning assistance from a landscape design professional, River Bend Park offers potential as an important link in the Washougal River Trail system. Recommendations for River Bend Park include:

- River Bend Park does not meet the minimum design standards for neighborhood parks. Keep options open for land acquisitions to expand the park footprint and river front access. If an acquisition occurs, create a safe passage to the riverfront with a trail system. Without the acquisition, consider fencing the top portion of the park along the hillside for visitor safety.
- Incorporate a deck system (similar to the Sandy Swimming Hole) at the north end of the lawn for sunbathing and picnicking.
- Include an ADA accessible path through the site.
- Manage noxious weeds and restore the riparian area to native plant species. Establish a mitigation banking program for natural areas.
- Consider incorporating an educational/interpretive element.
- Consider adding user friendly, ADA accessible amenities, such as a playground, a bicycle rack, updated signage, improved seating, etc.

Riverview Park

This property was acquired as a residential lot, partially donated by Riverview Community Bank for the purpose of encouraging outdoor recreation. Electric, water, and sewer utilities are included on the site. At less than a ½-acre, the size of this lot does not meet the minimum design standards for a neighborhood park. The site is also undeveloped and sloped which would require additional resources for

site improvements. In addition, this area is already well served by parks including Oak Heights Park. For these reasons, the Public Works Department should divest in this site or transfer ownership to another City department. Resources should be allocated to improving other parks, including nearby Oak Heights Park and Hartwood Park.

COMMUNITY PARKS

Hathaway Park

Hathaway Park consistently ranks as Washougal's most visited park because of its place of prominence in the center of the community and how it fronts the Washougal River. Hathaway Park possesses the widest variety of amenities of all the City of Washougal parks in the system. Many of the elements in the park are older and may need capital investment. Recommendations for Hathaway Park include:

- Replace the playground.
- Pave the lower Hathaway parking lot.
- Add new elements including a disc golf course.
- Expand or relocate the community garden to increase its footprint.
- Renovate or replace existing park restrooms. Add a new restroom on the east side near the pickleball courts and gazebo.
- Complete pickleball court improvements.
- Improve the existing picnic shelters. Add water and power to these facilities where lacking.
- Add a more extensive path system, including an ADA accessible route through the park and a river-view path along the bank in upper Hathaway Park.
- Implement a tree replacement plan to ensure continued tree canopy.

Additional Considerations

- Acquire adjacent or in-holding properties to expand services to the public. Properties should be considered for acquisition that complete trail links, increase public open space, improve frontage property to streets and the Washougal River
- Replace aging structures and buildings based on the comprehensive plan.
- Create "no-mow" zones to ease maintenance costs and improve habitat for wildlife.

- Include more and better amenities, including picnic tables, barbecues, bicycle racks, water fountains, benches, and trash cans. Improve the condition of the Lower Park river side trail and continue extending the trail from the parking facility to east to the Schmid Family Park property. This project encounters private property negotiations.

Schmid Family Park

This is Washougal's newest property on the Washougal River was acquired partially with a 2016 Clark County Conservations Futures grant and a retroactive Recreation and Conservation Office Local Park grant in 2018. Naming rights for this park are reserved for the Schmid Family, who requested "Schmid Family Park." The site consists of approximately 13 acres of river floodway suitable for low intensity park use. The property also has 5 acres of developable "upland" next to 32nd Street where higher impact, more dynamic recreation features would be located. These two areas have different potentials for recreation. Recommendations for this site include:

- Develop and implement a master plan with community park features utilizing a structured public involvement process. In 2016, the City of Washougal assembled a design advisory board to review the needs of the community, the character of the site, and the limitations of the property acquisition. The advisory board determined the greatest needs of the community are as follows:
 - > Shelters: large pavilion for events/groups of 50+ and multiple small family sized picnic units.
 - > A new playground.
 - > Permanent restrooms.
 - > Amphitheatre for outdoor concerts or public events.
 - > A soccer field.
 - > Boat launch/water access.
 - > Accessible pathways between park elements and connections to other off-site parks or trails.

Additional Considerations

- Consider easements or acquisition of adjacent properties to expand services to the public for trail links, increased public open space, improved frontage property to streets and the Washougal River.
- Consider disc golf in the areas around the upper portion of the park. If installation of a disc golf course is deemed to be a viable option for the

lower area, this recreation element could be added to the lower trail through the floodway and connect Schmid Family Park to Hathaway Park.

- Add game and “other” recreation facilities: horseshoe pits, lawn bowling, croquet, skate park, bocce, spray ground, bicycle pump/skills track, etc.
- Support art or cultural displays.
- Connect neighborhoods to the west side of the Washougal River to this park via pedestrian bridge.

SPECIAL USE PARKS

Camas/Washougal Skate Park

The Cities of Camas and Washougal pooled funding to provide the Camas/Washougal Skate Park. Both cities should promote transportation projects near the Skate Park to improve the safety and ease of access for users. Currently the site needs a major renovation, and the City of Washougal is committed to contributing funding to support site improvements. While continuing to coordinate future investments with the City of Camas, local users and skatepark design experts should also advise on necessary changes and improvements.

George J. Schmid Memorial Park

George J. Schmid Memorial Park develops and operates according to an inter-local agreement between the Washougal School District and the City of Washougal. The School District owns the land and provides the first line of maintenance. The City of Washougal provides the ball field development with granting assistance and minor maintenance. In 2006, Washougal constructed baseball field #1 in 2006 and completed baseball field #2 in 2009 with funds acquired by a Youth Athletic Facility grant through the Recreation and Conservation Office. Completion of the third field will be completed in 2021.



Source: City of Washougal

Recommendations for George J. Schmid Memorial Fields include:

- Update agreement for use and management of Schmid Memorial Park.
- Seek grants to defray development costs of the final field and appurtenances.
- Work with the School District to provide trail connectivity to Mable Kerr Park at the north boundary of the property.

Reflection Plaza

Reflection Plaza is a remodeled square in downtown Washougal. A 2010 improvement to the park installed a living Christmas Tree on the northeast corner of the property. The unused Christmas Tree well in the center of the plaza could be used for rotating art displays or other similar displays. The well is fitted with electricity and the structure lends a foundation for a moveable base. In 2015, new brightly painted picnic tables were added for a splash of color and additional seating. Recommendations include adding a new restroom and general cleaning of this site.

POCKET PARKS

Beaver Park

Based on outcomes of the community questionnaire and discussions with the Park Board, Beaver Park offers minimal public recreation benefits as a developed park. However, the site offers a suitable location for a City sewer lift station. The Public

Works Department should transfer maintenance and management responsibilities of this site to another City department. That frees up resources so that park investment can focus on the recently acquired Downtown Park site that will need maintenance attention to support recreation needs in this area.

WATERFRONT PARKS

Sandy Swimming Hole

Sandy Swimming Hole is a heavily visited park that provides swimming access to the Washougal River. This waterfront park has a large deck overlooking the river.

Recommendations for Sandy Swimming Hole include:

- Improve to support bike access, since this park receives heavy usage by youth.. Provide additional bicycle parking located on a paved surface closer to the parking lot.
- Consider adding user friendly, ADA accessible amenities, such as a bicycle rack, improved seating, and kayak rack.
- Construct a new parking area and improve existing off-street parking.
- Replace the aging restroom.
- Provide sidewalk, bike, or off-street trail improvements along Shepherd Road to improve safety and access to Sandy Swimming Hole.

Additional Considerations

- Improve the sunbathing lawn area adjacent to the river. Provide a better transition between lawn areas and surrounding vegetation by creating an edge and providing a landscape plant transition zone using native riparian vegetation.
- Consider adding a location for community art, an educational element, or mitigation banking system at Sandy Swimming Hole.
- Consider making a property acquisition to meet parking demands during peak park use. Providing additional off-street parking will improve safety along Shepherd Road.

Steamboat Landing

Steamboat Landing is a waterfront park that offers a panoramic view of the Columbia River. The dock is heavily used for fishing, especially during shad season. The SR-14 Pedestrian Tunnel provides direct access between the downtown district and Steamboat Landing, making this park a highly visited focal point of Washougal. After winter damage destroyed a section of the dock, the structure was entirely rebuilt with new pilings in 2019. Recommendations for Steamboat Landing include:

- Provide an ADA accessible connection between the observation deck and the parking area and/or the SR-14 Pedestrian tunnel.
- Update and clean existing restrooms.

Additional Considerations

- With the assistance of a design professional, develop a master plan that showcases the scenic views from the observation deck and improves accessibility throughout the site.
- Incorporate community art or educational displays for public interest or interpretation.
- Increase seating elements throughout the park.
- Improve parking facilities at the park.
- Consider adding user friendly, ADA accessible amenities, such as a bicycle rack, updated signage, improved seating, a kayak rack, and a kayak dock to the existing structure.

NATURAL PARKS

Eldridge Park

Eldridge Park is the largest undeveloped site in the Campen Creek Greenway. Because of deed restrictions, this park must remain in a natural state for passive recreation and must retain the name of Dr. Eldridge. Recommendations for Eldridge Park include:

- Make habitat improvements to Eldridge as a mitigation-banking site.
- Incorporate interpretive and/or educational pieces throughout the site.
- Develop “no-mow” zones with vegetation to attract wildlife.
- Look to acquire adjacent properties for purposes to expand open space and trail connectivity. For example, in 2011 the city assumed ownership of Rolling Meadows 5 property, offered to the City of Washougal by the HOA. This property bridges a gap between the Eldridge Park Complex and another City of Washougal-owned parcel and joins 40 acres together for future trail development.

Kerr Park

Kerr Park is located to the north of the Washougal School District Administration building and George J. Schmid Memorial Fields. Campen Creek delineates the boundary between the park and Orchard Hills Golf & Country Club. Since 2007, Washougal Parks Department personnel and volunteers have worked diligently to

clean the site of invasive ivy and blackberries. Kerr Park trail provides two trailheads: The east at Sunset View Road and the west at Gifford Place. Recommendations for the Kerr property include:

- Implement a tree replacement plan to ensure continued tree canopy and replanting of trees damaged from winter 2020 storm.
- Consider an agreement with the School District and/or Orchard Hills Golf Course to share opportunities for such activities as mitigation banking, continued trail development, and/or outdoor learning environment.
- Improve the Sunset View Road frontage for safer trail connectivity.
- Continue to work toward invasive weed removal and native habitat restoration for the benefit of wildlife and quality of visitor experience.

Additional Considerations

- Incorporate nature friendly art displays or interpretive features into the site.
- Look to acquire adjacent unused properties belonging to either the Washougal School District or the Golf Course. Improve access into the property through easements and additional trailheads.
- Consider installing fencing between the residents or School District and the park to improve safety and limit unwanted vehicular activity in the park.

Look Out Ridge Phase 3, Tracts A and B (Dogwood Park)

Look Out Ridge consists of 1.1 acres of wetland and mitigation planting in the “Look Out Ridge” subdivision. The City maintains two tracts: Tract A is a protected wetland and no additional improvements can occur, and Tract B is currently overgrown with vegetation. The property has a small trail and bench to overlook the Columbia River. The site offers panoramic views of the Columbia River Gorge mouth, Mount Hood and Oregon. For these reasons, the City should divest in these two tracts including transfer of ownership, potentially to the HOA. Resources should be allocated to improving other parks, including nearby Oak Tree Park.

FUTURE PARKS

Downtown Park and Community Garden

The City purchased this site in 2016. Located just east of Downtown Washougal along Main St., the property’s proximity to higher density residential uses and employment make it an ideal opportunity for a future park. In 2020, the City developed a conceptual plan for the site with a vision that provides a full sensory celebration (e.g., sight, sound, touch) of water through art and play. Potential elements include a covered picnic area, multiple play areas, and other features that highlight sustainable/green stormwater, exploration and natural play. Since this

time, the City developed the site as a community garden space. The City should continue to leverage the park concept and pursue grant funding to support design and development of this site.



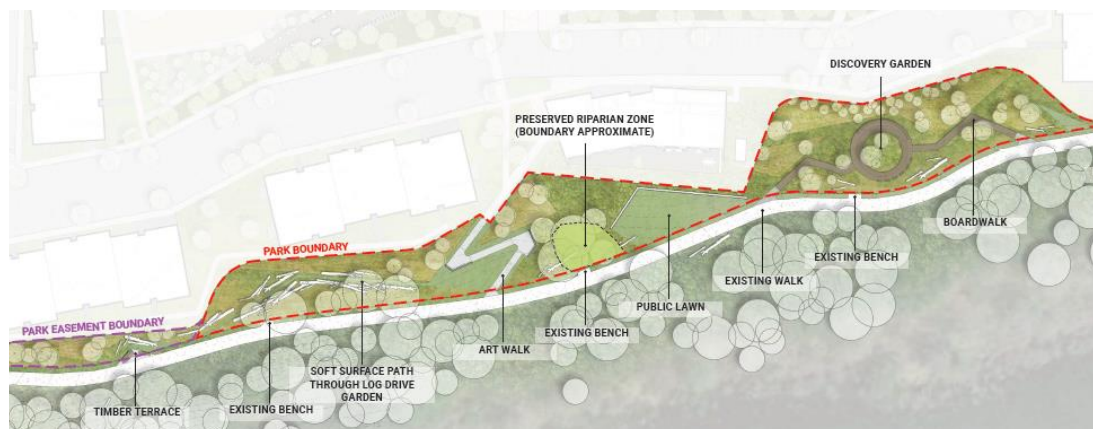
Source: MIG

Granite Highlands Park (Neighborhood Park)

This site is under development as part of the Granite Highlights residential subdivision in northwest Washougal. The completed park will feature landscaping, a small open lawn and play area.

Ninebark Park (Waterfront Park)

This park is under development as part of a mixed-use project near Parker's Landing along the Columbia River. When complete, the park will feature natural play features, gathering spaces, a continuous waterfront pathway and interpretive features.



Source: City of Washougal

New Community Park (CP)

A new community park should be developed north of the current City limits and west of the Washougal River. Recommendations for this site include:

- Once a site is acquired, prepare a master plan to guide the future development of the site.
- Link the proposed bikeway/off-street trail to this park site.
- Follow the community park recommendations for site selection and design program, as well as timing of park development.
- If possible, provide trail connections to the Washougal River, citywide trail systems, and regional trails through Clark County.
- Consider adding a unique feature or design element such as an interactive water feature, skate spot or skate elements, bike park or similar facility.

New Neighborhood Park (NP1)

A new neighborhood park is needed west of the Washougal River, in the north end of the City to serve residential development. Recommendations for NP1 include:

- Acquire a site approximately 2 to 3 acres in size, consistent with the site selection guidelines in this plan.
- Develop a master plan for the site that is consistent with the design guidelines.
- Provide local linkages between the park and the citywide trail system development of the site.
- Implement the master plan as the area develops.
- Ensure the property is viable for playground and restrooms, pertinent to critical lands and purchase contract agreements.
- Seek granting funds for acquisition as opportunities arise.

New Neighborhood Park (NP2)

The City should seek a new neighborhood park just north of city limits, potentially in conjunction with other City of Washougal property near Lehr Road.

Recommendations for NP2 include:

- Follow the neighborhood park recommendations in Appendix E for site selection and design program, as well as timing of park development.

- Acquire a site of approximately 2-3 acres. Once a site is acquired, a master plan should be prepared to guide the future development of the site.
- Link the proposed bikeway/off-street trail system to this park.

New Off-leash Dog Area

An off-leash dog area provides a location where residents can exercise and interact freely with their dogs. The City should consider incorporating one or more off-leash dog areas into new community parks. Ideally, an off-leash area should be at least five acres in size, fenced with a double-gated entry, have nearby parking, and include amenities such as water, benches, and trashcans. The City should also consider several smaller off-leash dog areas scattered around the city in existing park property or vacant property.

The site should not be isolated visually or physically for safety. Noise impacts on neighbors should be considered and special attention should be paid to the potential impact of a dog park on the sensitive environments and habitats surrounding the site. The City of Washougal should also consider partnering with the City of Camas or seek out other properties for a separate park. An area that appears ideal for both Camas and Washougal residents is the land owned by the City of Camas, under the powerlines near Goot Park.

New Community Garden

Community gardens provide a location where community members can grow plants and vegetables on individual plots, usually for a small fee. Establishment of community gardens should serve a trial period of at least three years. 2010 was the first year of the Hathaway Park Community Garden east of the pickleball courts and in 2012 the City upgraded the garden with raised cedar beds with financial assistance from WSU Master Gardener Foundation. This garden currently has 26 - 4'x14' raised cedar beds and 6 - 4'x4'x30" raised ADA boxes. There is ample off-street parking available in this area.

Several of Washougal's neighborhood and community parks have potential for community garden use including Elizabeth Park or Hamllik Park. The site selected should have:

- At least six hours of sunlight per day;
- Access to water;
- A means of vehicular access so that soil, mulch, and other materials can be brought into the site.

Spray Ground or Splash Pad

A spray ground or splash pad are water play features that are very popular and provide a means of integrating aquatics into parks at a relatively low cost. Washougal should consider adding at least two spray grounds in community parks, one south of the Washougal River (preferably at Hathaway Park) and the other in the north end of the City.

Indoor Recreation Center

A great need for both indoor recreation space and a senior center is identified in all public surveys. More and more communities in the Northwest are offering multi-use recreation centers because of the region's inclement winter weather and the multiple opportunities possible in an indoor facility. If designed correctly, recreation centers can offer a wide variety of community activities at a reasonable cost. Most progressive community centers now provide rooms for receptions, meetings, and large group gatherings, as well as gymnasium and recreation space.

The community would benefit from a multi-functional building combining the functions of both an indoor recreation center and a senior center. Before pursuing a project of this magnitude, a feasibility study, business plan and market analysis should be conducted to assess the options and form the groundwork in the long-term planning of such a community resource. Preliminary investigation would also identify an appropriate site, building program, and operations strategy that is the best fit for the City's financial goals. Many communities plan recreation centers to maximize revenue generation and minimize operating subsidies to meet financial goals.

The following facilities should be considered for an indoor recreation center to meet community needs, according to surveys:

- Gymnasium (at least 1 full-sized courts)
- Multipurpose room for special events, receptions, and dance classes.
- Catering kitchen
- At least two classrooms/meeting rooms to accommodate various sized groups.
- Exercise room (aerobics, dance, fitness classes, etc.)
- Fitness center
- Support facilities, including lobby, restrooms, office space for staff, locker rooms, storage space, etc.
- Arts and crafts room
- Concessions/vendor space such as a coffee kiosk or snack bar
- Potentially a youth center and/or a senior center
- Potentially an indoor aquatic center

In 2018, discussions with the City of Camas and the Port of Camas/Washougal considered the need of a community center to serve both cities, particularly after the closure of the Camas Swimming Pool in Crown Park. Without a public or other equity partner, Washougal would likely not be able to support a significant community center. The two communities should keep options open and look for opportunities to support a major recreation center.

Whitewater Park

The City should explore the possibility of providing a whitewater park in Washougal. This type of recreation facility uses natural materials to provide a whitewater course with permanent rapids adjacent to the river. If there is community interest in this type of recreation activity, the City should conduct a feasibility study on the long-term costs of operating such a facility prior to deciding.

TRAIL CORRIDORS

Columbia River Trail

The Columbia River Trail provides an important east-west connection in Washougal from the Columbia River Gorge to the Camas City limits, as well as viewing opportunities along the Columbia River. Washougal should seek opportunities to increase access at points along the levee and improve trail spurs that currently exist. In the summer of 2010, the SR-14 pedestrian tunnel opened to allow a seamless access between the downtown core and the Columbia River.

The capital project list includes trail development cost for an 0.8-mile segment that connects Steamboat Landing west to the Port of Camas/Washougal Marina. To continue the connection to Steamboat Landing, an off-street trail requires easements across private residential properties and the State of Washington State Route 14 right of way.

Jemtegaard School Trail

This trail will provide a needed connection between neighborhoods north of Sunset View Road to Jemtegaard School. The capital project list includes trail development cost for a ½-mile trail to improve connectivity.

Additional Trail Corridors

There are several additional off-street trails that are part of the long-term vision for Washougal. These trail corridors will require additional planning and negotiating to understand more specific alignments, acquisition or partnership opportunities, and planning and design needs.

- **Washougal River Trail:** An ideal vision for the Washougal River Trail is a trail adjacent to the river, similar to the trail in the Washougal River Greenway in

Camas. Due to private property and topography issues, a trail connection paralleling the river on surface streets provides an alternative at some sections of the river. Existing parks and easements may connect to segments of this riverfront trail. The following actions detail the short-term strategy:

- > Actively seek properties suitable for waterfront parks or easements that provide trail opportunities along the south Washougal River frontage.
 - > Include a riverfront trail in the master plan for the Schmid Family Park and connectivity to Hathaway Park.
 - > Keep options open to develop a pedestrian crossing to bridge the Washougal River Road at the Schmid Family Park.
 - > Actively seek waterfront easements and property to expand public access and trails along the Washougal River when the opportunity arises. In particular, identify and secure land outside existing city limits and potentially north of the UGA before it is developed and the opportunity is lost.
- **Bonneville Power Administration Utility Easement:** An east-west connection is also needed in northern Washougal, where there are a number of constraints due to topography development patterns. Sitting outside the City limits, a utility easement in northern Washougal has potential for providing a connection through areas of growth development in the next several years. The easement traverses the Washougal River at a location that is steep and extremely difficult to cross. While a bridge connection would be ideal, the City of Washougal recognizes that this BPA easement is best divided into North West and North East trail segments.
- **Hood Avenue Multi-Use Trail:** Based on an alignment identified in the previous plan, the City is working with a developer to complete a connection between LaCamas Lake Park/Crown Rd. and SE 303rd Ave. in the north-west neighborhoods of Washougal. When completed, the eight-foot multi-use trail will provide an alternate route from sidewalks on both sides of Hood Avenue.
- **North West Bonneville Power Administration Easement Trail:** The BPA utility easement in northern Washougal west of the Washougal River has potential for providing a connection through an area likely to grow with mixed use development in the next several years. This utility corridor should be used to develop the east-west connection, linking the Washougal River to currently undeveloped areas north of the existing city limits.

- **North East Bonneville Power Administration Easement Trail:** An east-west connection is needed on the east side of the Washougal River. This system is partially developed but has missing links through neighborhoods. The greatest missing link is a strong connection between the Campen Creek Greenway and the Easement at "W" Street. A more direct route has been requested of citizens to access Hartwood Park. The existing trailhead for the Campen Creek Greenway is accessed on streets without sidewalks.
- **West Side Utility Easement Trail:** Washougal residential development has been occurring in the northern hills. A north-south utility easement running from the Washougal River Greenway to the peak of the hill could potentially link these areas to the historic downtown, Washougal River and the North West BPA Easement Trail in the future.
- **Steigerwald Route:** The City of Washougal should keep options open to link to the Steigerwald National Wildlife Refuge trail system to the Campen Creek Greenway. A partnership with Clark County, Washington State Department of Transportation, and the US Fish and Wildlife Service must be forged to create this connection.
- **Campen Creek Greenway Trail:** The east side of town provides an extensive opportunity for off street trails through City of Washougal parks and open space. Kerr Park, Hartwood Park, and Campen Creek Park provide trailheads for the looped trail system. Several spur trails could be established to connect to other developing systems. The trail possesses deficiencies in off-street and sidewalk continuity. 39th Street and Sunset View Road are two of the most critical missing links in this system.
- **Other Off-Street Trail Connections:** Several short, missing off-street segments interrupt pedestrian and bicycle connectivity. In order to link these trail systems, enhancements to intersections or roadway crossings are needed to make a safer path. Options may include:
 - > A connection between neighborhoods to the East of 32nd Street to Schmid Family Park; and
 - > A continuous connection between all parks by either an off-street or sidewalk.

Washougal should consider connections within existing street rights of way to provide additional pedestrian and bicycle corridors. Options may include:

- > A north-south connection along the Washougal River Road up to Woodburn Road;

- > A continuous connection from J Street along 39th Street to Evergreen Way; and
- > A connection along Sunset View Road, past Kerr Park to Evergreen Way.

INTERGOVERNMENTAL COORDINATION AND PARTNERSHIP SITES

Washougal benefits from a wealth of park and recreation resources under ownership by other agencies. These sites provide a variety of opportunities for Washougal residents, and contribute to the City's park system.

- **Goot Park:** Goot Park, a City of Camas park, provides a ball field used by many Washougal residents through the East County Little League. Located on the Washougal-Camas boundary, this site benefits residential neighborhoods not served by other Washougal parks. Washougal should consider participating in future capital improvements at this site, particularly if Washougal residents are included in the planning process and benefit from improvements made there.
- **Washougal River Greenway:** The City of Camas developed the Washougal River Greenway, a natural open space area along the Washougal River. The Camas/Washougal Skate Park, located on the edge of the Greenway, begins the trailhead at the Washougal/Camas boundary. The Greenway offers a trail corridor that is used by Washougal residents, and is a wonderful recreation asset for both communities. Washougal should connect future trails into the Washougal River Greenway to expand on this recreation resource.
- **Captain William Clark Park:** Captain William Clark Park is a joint venture of multiple local agencies, including the City of Washougal. Washougal should continue to be a partner in this important regional site, working with the City of Vancouver, Clark County Parks, Port of Camas/Washougal on implementation of the Phased Master Plan. In the meantime, the City should monitor its expenditures related to the site and ensure that its contributions to the joint effort are equitable and as called for in the Maintenance and Operations Agreement. Washougal is responsible for the parking facility north of the dike and limited aspects of the restroom facility there. Should the RV parking as designed in the Master Plan be implemented by one of the other partners, the City of Washougal should consider contributing to this improvement, since the town benefits economically by having a functional RV facility.
- **Steigerwald National Wildlife Refuge:** The City of Washougal supported the 2009 implementation of the Wildlife Refuge master plan and looks forward to construction of a planned environmental education center. The regional trail system along the Port of Camas/Washougal levee and through

William Clark Park provides linkages into the Steigerwald trail system, so that Washougal residents can best experience the natural resources at Steigerwald. The Refuge is available by a parking facility via SR-14 and does not allow bicycles or pets on the trails.

- **Pendleton Baseball Fields:** Two heavily used baseball fields and one overlapping soccer field are located on property owned by the Pendleton Woolen Mills. Organized sports groups use these fields with permission from Pendleton management. Pendleton Woolen Mills may choose to develop this property in the future. Should development include residential uses, the Downtown Park site located to the north should be created to serve residents.
- **Fishback Stadium:** The City of Washougal seeks greater use of the stadium through an inter-local agreement with the Washougal School District. Washougal and the School District agree to investigate options to improve the facility when it benefits the community as a whole. The School District would continue to own the land and provide maintenance of the facility.
- **R.V. Parking:** The City should consider constructing spaces for fee-based R.V. parking within the City limits. The addition of functional R.V. spaces would allow for greater access to Washougal for travel or vacation and benefit local community businesses. Currently the only zoned area for implementing RV parking is located near the Columbia River on Port of Camas/Washougal land. The City could work with the Port to develop such a facility. William Clark Park on the Columbia River is already designed and striped for RV parking, and ready for final details prior to renting spaces overnight. However, any overnight accommodations would require consideration for additional infrastructure such electrical and sewer hookups, and WIFI. Another suggestion includes changing local zoning code to allow development in areas throughout the City. The planning and site choice for this addition should be made in the near future to take advantage of available land.

Comprehensive Park & Recreation Plan

APPENDIX E: DESIGN GUIDELINES

This page intentionally left blank

Appendix E: Design Guidelines

These design guidelines provide planning and site programming guidance and direction for the planning and design of new parks and facilities. Because site conditions and characteristics vary these guidelines are not intended to override site specific concerns or judgments.

For each park and facility classification, these guidelines provide a description of the overall purpose, considerations for site selection, features to provide, and features to avoid (if any).

NEIGHBORHOOD PARKS

These parks provide close-to-home recreation opportunities for people living within approximately one-half mile walking distance of the park.

Guidelines

Size range	2 to 5 acres
Location/ Siting	Central to the surrounding neighborhood
Access	Must front a public street with connections to nearby trails and active transportation routes
Design	A contiguous area of at least 50% should be open and level. At least 50% of site must be bordered by a public street and/or the frontages of surrounding uses.
Minimum Features	Native landscaping, signage, playground equipment, picnic areas, open grass areas or multi-use open grass areas for practice field sports.
Features to Avoid	Facilities for large groups, fields for competitive use or off-street parking; facilities for activities that result in overuse, noise, parking problems and congestion should not be provided.

COMMUNITY PARKS

Intended for use by the entire city, these parks can accommodate a higher level of use than neighborhood parks and offer facilities that create a community-wide draw.

Guidelines

Size range	8+ acres
Location/ Siting	Accessible to the entire community, at least ½-mile from the nearest community park and, and with excellent access to transit.
Access	Must front a public street with connections to nearby trails and active transportation routes
Design	The entire site should be open and level unless other existing features are incorporated into the design and function of the site. At least 50% of site must be bordered by a public street and/or the frontages of surrounding uses.
Minimum Features	At least one community-scale facility, native landscaping, signage, playground equipment, picnic areas, open grass areas or multi-use open grass areas for practice field sports, off-street parking and restrooms.
Typical Features	Spray park, skate park, reservable picnic area, amphitheater, boat launch, disc golf course, regional trailhead, or similar facility.

SPECIAL USE PARKS

These are unique park sites or stand-alone recreation areas designed to support a specific, specialized use. Examples of existing special use areas in Washougal include the skate park and Reflection Plaza.

Guidelines

Size range	Depends on the intended use, but the size should be adequate to accommodate the special use and any necessary support facilities.
Location/ Siting	A feasibility study for the special use will determine any locational criteria, which may vary depending on the use.
Access	Access should be provided via a collector or arterial street due to the higher level of use expected.
Minimum Features	Site identification signage, site furnishings for the intended scale and use of the park, on-street or off-street parking to

	accommodate the planned use of the site, accessible pathway connecting site elements.
--	---

WATERFRONT PARKS

Distinguished by their function of providing access to water bodies, these parks typically support enjoyment of water-related activities, such as swimming, fishing, boating, and bird or wildlife viewing.

Guidelines

Size range	The size depends on intended use of the site, but should be adequate to accommodate the desired use and necessary support facilities. For parks that provide direct access to water or beach front, larger parcels are preferred to accommodate a greater number of users, especially in warm weather.
Access	Public access must be provided by a public trail or, where feasible, access should be provided from a public street.
Minimum Features	Site identification signage, appropriate site furnishings for the intended scale and use of the park, accessible pathway connecting site elements.

NATURAL PARKS

Undeveloped lands primarily left in a natural state. Most sites are intended to protect open space; passive park facilities may be provided secondarily. This type of land often includes wetlands or steep hillsides. In some cases, environmentally sensitive areas include wildlife habitats, stream and creek corridors, or unique and/or endangered plant species.

Guidelines

Size range	Site size should be determined based on the natural open space needs, with adequate protection provided for the resource.
Access	Where feasible, public access and use of natural open space areas should be encouraged through trails and other features, but environmentally sensitive areas should be protected from overuse.

Design	Frequently, Natural Parks possess restrictions on the deed or plat that govern perpetual use of the property. Natural Parks may serve as trail corridors; however, structures such as playgrounds, pavilions and restrooms are not typically allowed uses.
Minimum Features	Site identification signage, appropriate site furnishings for the intended scaled and use of the site, interpretive signage, on-street or off-street parking; amount is dependent on facilities provided in the natural area.
Features to Avoid	Improvements that conflict with or detract from the site's natural resources, such as turf, ornamental plantings, and active uses such as sports fields.

TRAIL CORRIDORS

Trail corridors provide opportunities for trail-oriented activities, and connect community destinations and parks, while offering alternatives to driving. Trail corridors allow for transportation and trail-oriented recreational activities. Multi-use trails are the preferred trail type for Washougal because they have the potential to serve the broadest spectrum of the public, including walkers, hikers, runners, and cyclists. Multi-use trails can even serve equestrian users in certain areas.

Guidelines

Facility Types	<ul style="list-style-type: none"> • A variety of pathway types are needed to accommodate activities such as walking, running, biking, dog walking, rollerblading, skateboarding, and horseback riding. including sidewalks, bikeways, multi-use trails and paths. • Trails can be located within parks, within greenways, or be designed as a part of the citywide transportation system. Waterways can provide trail-like facilities for boating and canoeing.
Location/ Siting	<ul style="list-style-type: none"> • Trails should be located and designed to enhance accessibility wherever possible, with high priority being loop or destination opportunities on portions of trails near staging areas. Where routes use existing streets, the pathway should be designed to minimize potential conflicts between motorists and trail users. • Additional trail easements or dedications should be sought to complete missing trail segments, link parks, and expand the overall trail network into areas that are already developed. If

	<p>no other means can be found to provide missing links, on-street trail links should be used.</p> <ul style="list-style-type: none"> • Whenever possible, recreation pathways and trails should be separated from the roadway. • Local trails should be required in residential subdivision planning and should connect to the city's trail system and neighboring local trails. Trail locations can be determined during the land use review process. • Trail alignments should consider soil conditions, surface drainage and other physical limitations that could increase construction and/or maintenance costs.
Trail Design	<ul style="list-style-type: none"> • Trails should be planned, sized, and designed for multiple uses except where environmental or other constraints preclude this goal. • A 25' minimum right-of-way should be secured for multi-use trails. • An 8-12' paved width should be developed, with 2' wide unpaved shoulders on each side. • Approximately 16' should be provided from the shoulder to each neighboring property line if the trail runs adjacent to a private property. If the trail runs adjacent to the Washougal River or another sensitive area, it should be located at least 20' away unless a larger buffer is recommended by the City. • Way finding and orientation signage should be provided to facilitate trail users. Signage should be provided at each major intersection and at trail entrances.
Trailhead Design	<ul style="list-style-type: none"> • Trailheads should include orientation signage and information signs, seating, bike racks and trash/recycling. • Primary trailheads should have parking and restrooms. • Trailheads should be incorporated into community parks where possible.