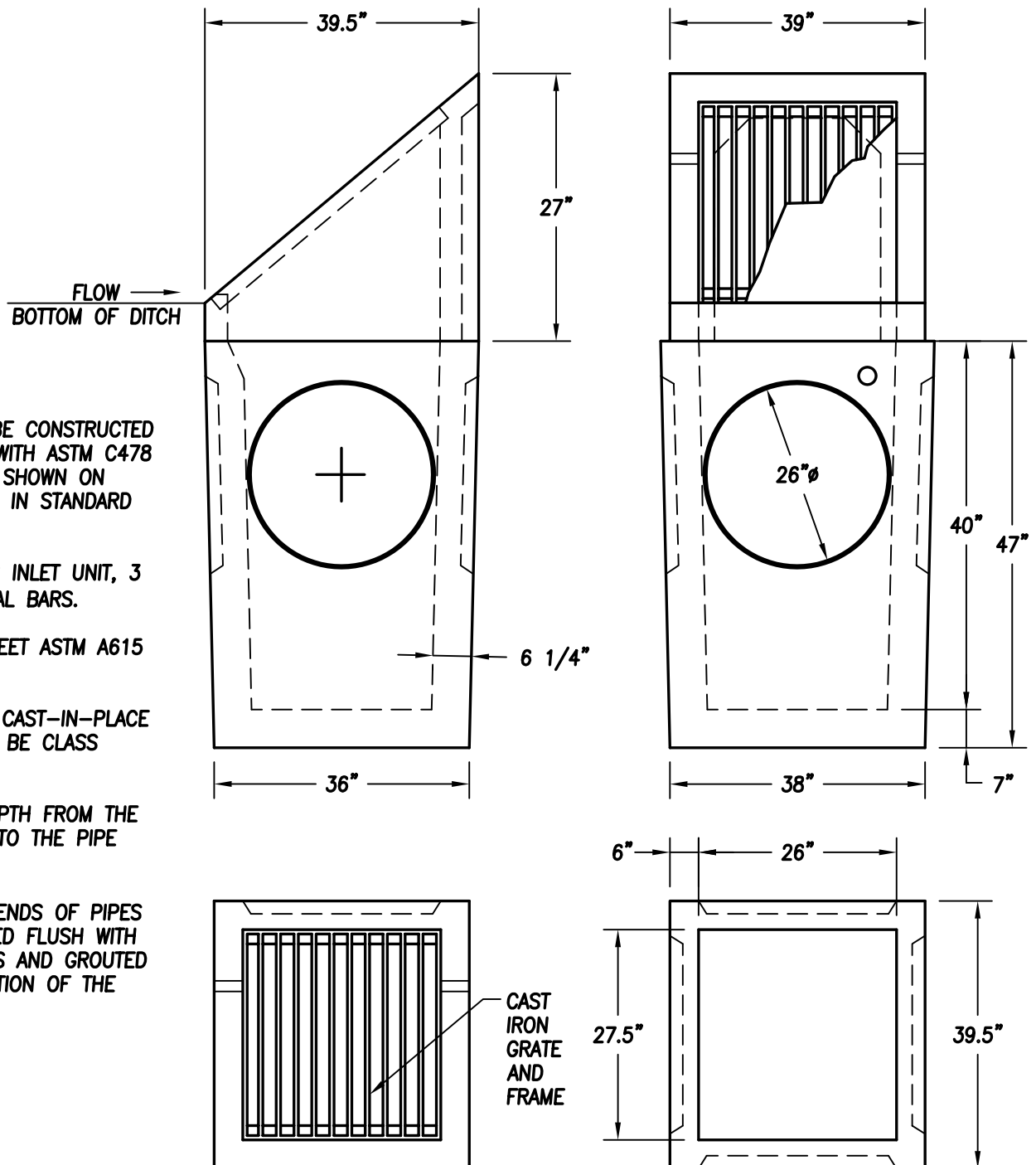


NOTES:

1. CURB INLET TO BE CONSTRUCTED IN ACCORDANCE WITH ASTM C478 & C890 UNLESS SHOWN ON PLANS OR NOTED IN STANDARD SPECIFICATIONS.
2. REINFORCING FOR INLET UNIT, 3 EA. #4 HORIZONTAL BARS.
3. ALL REBAR TO MEET ASTM A615 GRADE 60.
4. ALL REINFORCED CAST-IN-PLACE CONCRETE SHALL BE CLASS 4,000.
5. THE MAXIMUM DEPTH FROM THE FINISHED GRADE TO THE PIPE INVERT IS 5'-0".
6. ANY PROTUDING ENDS OF PIPES SHALL BE TRIMMED FLUSH WITH THE INSIDE WALLS AND GROUTED TO THE SATISFACTION OF THE CITY.



TOP VIEW - GRATE

TOP VIEW - CATCH BASIN

G-2 DITCH INLET

NTS