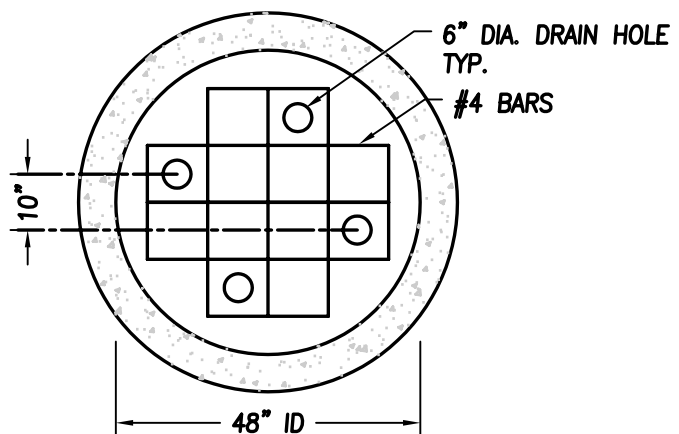


**NOTES:**

1. ALL PRECAST SECTIONS SHALL CONFORM TO REQUIREMENTS OF ASTM C478.
2. PRECAST CONE SECTIONS MAY BE ECCENTRIC OR CONCENTRIC.
3. ALL PIPING TO AND FROM PRECAST DRYWELLS SHALL HAVE AT LEAST 8" OF CRUSHED ROCK COVER CONTINUOUSLY AROUND PIPE WHERE DRAIN ROCK WOULD OTHERWISE BE IN CONTACT WITH PIPE.
4. PERFORATIONS SHALL BE HORIZONTAL ROWS OF (14) 2-1/4" SQUARE OR (14) 2-3/8" ROUND HOLES, EQUALLY SPACED. ROWS SHALL BE SPACED 6-1/2" CENTER TO CENTER.
5. GRAVEL BACKFILL FOR DRYWELLS PER WSDOT STANDARD SPECIFICATION 9-03.12(5).
6. UNDERGROUND DRAINAGE GEOTEXTILE, MODERATE SURVIVABILITY. PER WSDOT STANDARD SPECIFICATION 9-33.



**BASE SECTION - PLAN VIEW**

**PRECAST DRYWELL**

NTS

7. TYPICAL DRYWELL DEPTH IS 13'