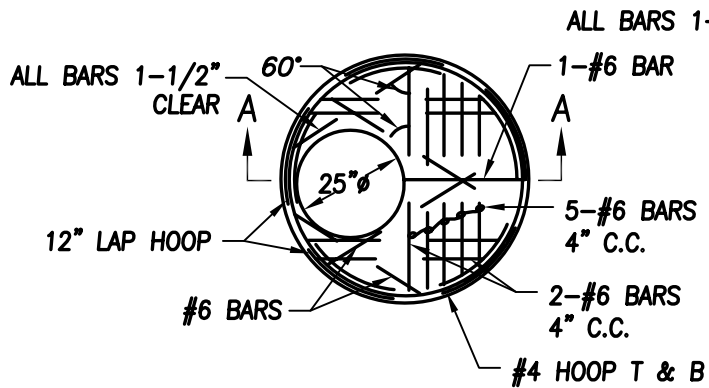
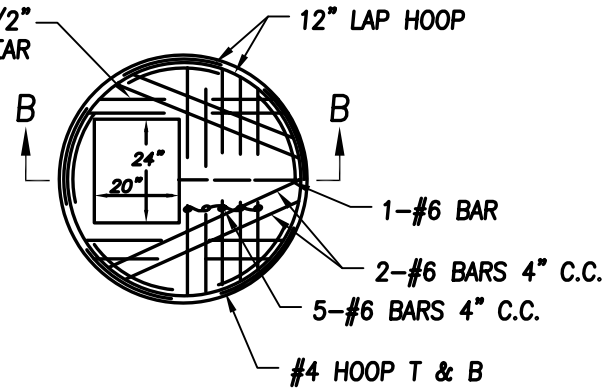


SECTION A-A

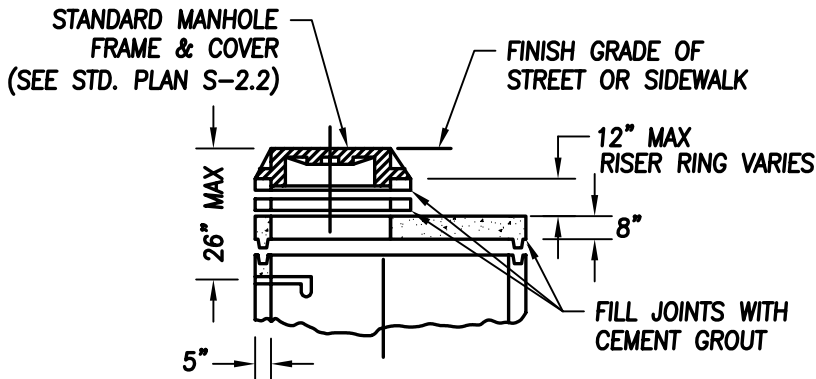
SECTION B-B



UNIT "MH"



UNIT "CB"



FLAT SLAB ALTERNATE

NOTES:

1. CONSTRUCTION SHALL CONFORM TO STANDARD PRECAST MANHOLE DETAIL IF NOT OTHERWISE SHOWN.
2. ALL PRECAST SECTIONS SHALL CONFORM TO THE REQUIREMENTS OF ASTM C-478. ALL POURED IN PLACE CONCRETE SHALL HAVE A 28 DAY STRENGTH OF 3000 P.S.I. & 2" TO 4" SLUMP.
3. ALL REINFORCING SHALL BE GRADE 40 STEEL.
4. MANHOLES UNDER 6'-0" IN DEPTH FROM RIM TO SHELF SHALL HAVE UNIT "MH" TOP SLAB IN LIEU OF CONE AS SHOWN ON STANDARD PRECAST MANHOLE DETAIL. UNIT "CB" TOP SLAB SHALL BE USED WHERE "TYPE 2" CATCH BASIN IS SPECIFIED. STANDARD RISER UNITS AND FRAME AND GRATE FOR CATCH BASIN SHALL BE USED IN CONJUNCTION WITH TYPE "CB" TOP SLAB.

TOP SLAB FOR STANDARD PRECAST MANHOLE